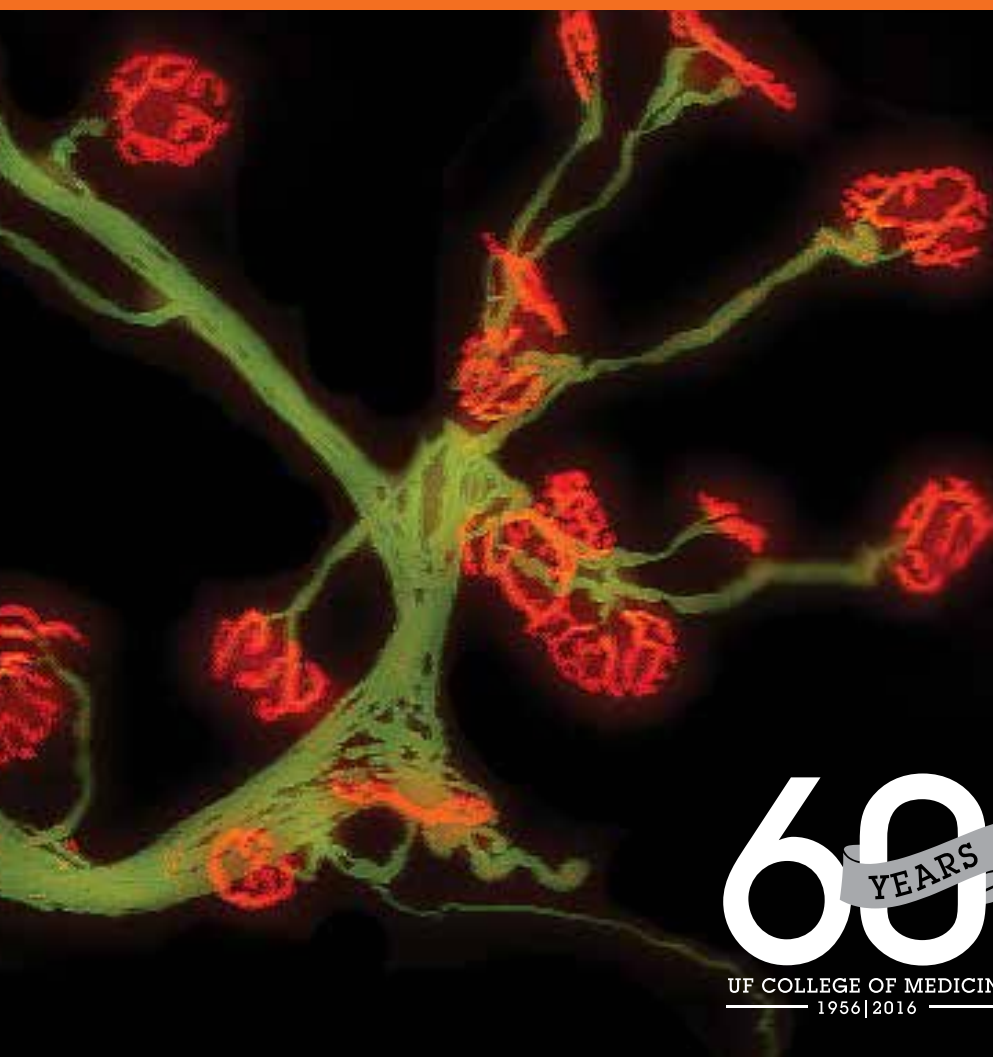


UNIVERSITY OF FLORIDA
COLLEGE OF MEDICINE

2016 Celebration of Research



60 YEARS

UF COLLEGE OF MEDICINE
1956 | 2016

Cover photo courtesy of Darin Falk and A. Gary Todd, UF Powell Gene Therapy Center



Celebrating research under one roof...

Welcome to the UF College of Medicine 2016 Celebration of Research. Every year we come together to celebrate the breadth, quality, and merit of the research landscape within the UF College of Medicine. As we have grown our research programs, this has become a logistical challenge. A few years ago we moved our poster session to the Stephen C. O'Connell Center. With more than 460 research posters on display tonight we are now even pushing the limits of this great venue. We remain committed to the opportunity to come together to highlight the cutting-edge interdisciplinary research of our faculty, postdocs, and students. More than ever, this event affords us a unique opportunity to visit with old friends, meet new colleagues, exchange ideas, and develop new collaborations and synergies.

This year we are rolling out the UF College of Medicine Research Landscapes video project. A sample of these videos are on display tonight at the Gate 1 entrance of the O'Connell Center. Please stop by to view this new and innovative way of conveying the power of our research programs, the excitement of our faculty, and the beauty of our home.

The annual Celebration of Research reminds us that it is through discovery and the impact of our research that we improve the quality of human life, and, in doing so, advance the College of Medicine and the University of Florida. As you attend this year's events please be sure to engage with the presenters and join me in thanking them for supporting and promoting research at the UF College of Medicine.

Michael L. Good, MD
Dean, UF College of Medicine

SCHEDULE OF EVENTS

Monday, February 22, 2016

5:30pm – 8:30pm Poster Session & Reception
Stephen C. O'Connell Center

Tuesday, February 23, 2016

12:00 noon Keynote Speaker
C1-11, Communicore Building, HSC

*“Pathogenesis of Severe Acute Respiratory
Syndrome and Middle East Respiratory Syndrome”*



Stanley Perlman, MD, PhD

Professor of Microbiology
Professor of Pediatrics
University of Iowa
Carver College of Medicine
Iowa City, IA

Sponsored by:
The Joseph & Leila Applebaum Visiting Professorship

KEYNOTE SPEAKER



Stanley Perlman, MD, PhD is a professor of Microbiology and Pediatrics at the University of Iowa Carver College of Medicine. His research training was initially in cell biology, developmental biology, and molecular virology, but after attending medical school and receiving additional training as a pediatric infectious diseases physician, his interests became focused on immunopathology and immune evasions in viral disease.

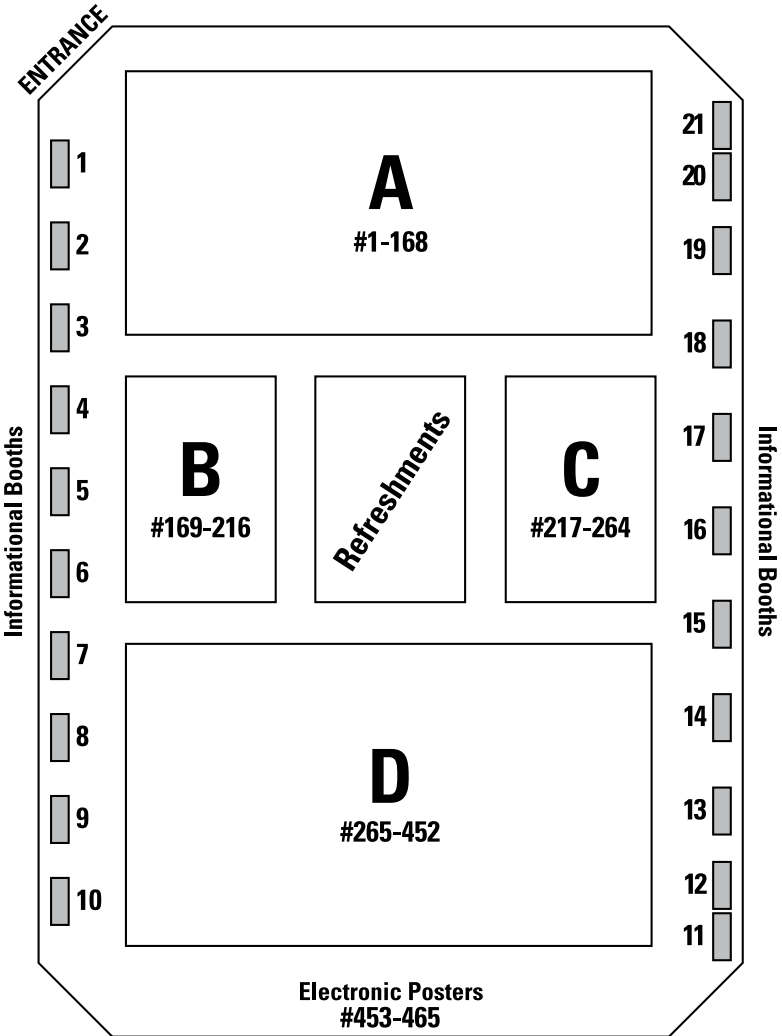
His expertise is in the relationship between virus replication in the infected host and the immune response to the virus. Dr. Perlman is especially interested in how the host response to the virus causes immunopathological disease. He has studied coronaviruses, with an emphasis on pathogenesis, for over 30 years and his current research is focused on the pathogenesis of murine coronavirus infections and the study of respiratory human coronavirus infections: SARS (Severe Acute Respiratory Syndrome)-coronavirus and human coronavirus MERS-CoV. The SARS-coronavirus and MERS-coronavirus cause the most significant diseases of any of the human coronaviruses.

Dr. Perlman has authored or co-authored over 190 peer-reviewed publications. He has been a member and/or fellow of multiple national medical societies including the Society of Pediatric Research, Infectious Diseases Society of America, and the American Pediatric Society. He was also elected to the American Academy of Microbiology, AAAS, and the Association of American Physicians.

FLOOR PLAN

GATE 1

GATE 2



GATE 4

GATE 3

INFORMATIONAL BOOTHS

Table #	Name
1	Powell Gene Therapy Center
2	UF Diabetes Institute
3	Center for Safety Simulation & Advanced Learning Technology
4	Interdisciplinary Center for Biotechnology Research
5	Center for Smell & Taste
6	College of Medicine Electron Microscopy Core Facility
7	Brain Rehabilitation Research Center
8	UF Center for Precollegiate Education & Training
9	Interdisciplinary Program in Biomedical Sciences
10	SF2UF Bridge to Baccalaureate Program
11-12	Research Administration & Compliance
13	Department of Health Outcomes & Policy
15	OneFlorida Clinical Research Consortium
16	North Florida Foundation for Research & Education, Inc
17	Health Science Center Libraries
18	UF Substance Abuse Training Center in Public Health
19	UF Research Computing
20-21	Clinical & Translational Science Institute

POSTER TITLES

INFORMATIONAL POSTERS

- 1. SECIMtools: Metabolomics tools for everyone.** Miguel Ibarra, Oleksandr Moskalenko, Alison Morse, Alexander Kirpich, Justin Fear, Lauren McIntyre
- 2. University-school partnerships to recruit and prepare students for biomedical careers.** Houda Darwiche, Julie Bokor, Christy Rodkin, Mary Jo Koroly
- 3. Interdisciplinary Center for Biotechnology Research.** Rob Ferl
- 4. Partners in preeminent research: How the HSC library supports and facilitates research efforts.** Ariel Pomputius, Margaret Ansell, Nancy Schaefer, Hannah Norton, Michele Tennant
- 5. UF Center for Addiction Research & Education.** Marieta Heaton, Sara Jo Nixon, Joanna Peris
- 6. Extrusion of 3D alginate tubes using two-step gelation approach.** Yifei Jin, Ashley Compaan, Tapomoy Bhattacharjee, Yong Huang
- 7. Deformation compensation during inkjet printing of vascular-like structures.** Kyle Christensen, Ashley Compaan, Changxue Xu, Zhengyi Zhang, Wenxuan Chai, Yong Huang
- 8. Process-induced cell injury during laser cell printing.** Zhengyi Zhang, Ruitong Xiong, Ashley Compaan, Wenxuan Chai, Lei Zhou, Yong Huang

AGING

- 9. Region specific expression of aging and cognitive genes.** Lara Ianov, Asha Rani, Ashok Kumar, B. Sofia Beas, Thomas Foster
- 10. Age-related decline of spatial discrimination performance based on difficulty may reflect pattern separation deficits.** Sarah Johnson, Leslie Gaynor, Patricia Sacks, Sean Turner, Wendy Yoder, Brandi Ormerod, Andrew Maurer, Jennifer Bizon, Sara Burke

11. Object-place paired associations require interactions between prefrontal and perirhinal cortices. Abigail Hernandez, Jordan Reasor, Sean Turner, Sarah Barthle, Sarah Johnson, Jennifer Bizon, Andrew Maurer, Sara Burke

12. Florida Medication Burden Assessment Rating - exploratory validation study. Andrew Pierce, Uma Suryadevara, Joseph Thornton

13. Does sympathetic arousal measured by skin conductance objectively quantify mobility self-efficacy? Sudeshna Chatterjee, Dorian Rose, Eric Porges, Dana Otzel, Raghashree Rajaravivarma, David Clark

14. Rehabilitation of corticospinal control of walking following stroke. Brittany Michael, Emily Fox, Dorian Rose, Evangelos Christou, Stephen Nadeau, Janis Daly, David Clark

15. Quantifying neuromuscular activation in older adults: A comparison of methodological techniques. Dana Otzel, Roger Fielding,Carolynn Patten, Kieran Reid, Edward Phillips, David Clark

16. Inclusion seeding by mutant α -synuclein fibrils in primary neuronal cultures and in transgenic mice. Nicola Rutherford, Mieu Brooks, Vincent Hudson, Benoit Giasson

17. Progress report on the roles of glutathione transferase α 4 in maintaining auditory function. Hyo-Jin Park, Chul Han, Mi-Jung Kim, Karessa White, Sarah Weintraub, Senthilvelan Manohar, Dalian Ding, Paul Linser, Richard Salvi, Shinichi Someya

18. Increased Nav1.5 channel late current underlies prolongation of action potential duration of ventricular myocytes from aged guinea pigs. Yejia Song, John Shryock, Luiz Belardinelli

19. Association of objectively-measured physical activity and incident cardiovascular events in mobility-limited older adults. Shannon Cochrane, Jodi Fitzgerald, Don Hire, Walter Ambrosius, Anthony Marsh, Catrine Tudor-Locke, Todd Manini, Shyh-Huei Chen, Thomas Buford

20. Effects of blood flow restriction on biomarkers of myogenesis in response to resistance exercise. Andrew Layne, Kelly Larkin-Kaiser, R. Gavin MacNeil, Marvin Dirain, Bhanuprasad Sandesara, Todd Manini, Thomas Buford

21. A detailed characterization of the dysfunctional immunity and abnormal myelopoiesis induced by severe shock and trauma in the aged.

Juan Mira, Dina Nacionales, Benjamin Szpila, Ricardo Ungaro, M. Cecilia Lopez, Jianyi Zhang, Lori Gentile, Angela Cuenca, Erin Vanzant, Brittany Mathias, Jeevan Jyot, Donevan Westerveld, Azra Bihorac, Anna Joseph, Alicia Mohr, Lizette Duckworth, Frederick Moore, Henry Baker, Christiaan Leeuwenburgh, Lyle Moldawer, Scott Brakenridge, Philip Efron

22. Chronic variable stress recapitulates age-related changes to GABAergic indices in the PFC.

Matthew Bruner, Joseph McQuail, Iara Backes, Rebecca Clifton, Barry Setlow, Deborah Scheuer, Jennifer Bizon

23. NR2A-containing NMDARs in the PFC are required for working memory and predict age-related cognitive decline.

Joseph McQuail, B. Sofia Beas, Kailey Simpson, Kyle Kelly, C. Jason Frazier, Barry Setlow, Jennifer Bizon

24. ACE2 Activator, Diminazene Aceturate, reduces adiposity, but preserves lean mass in young and old rats.

Erin Bruce, Yasemin Sakarya, Nataliya Kirichenko, Hale Toklu, Drake Morgan, Christy Carter, Philip Scarpace, Nihal Tümer

25. Using hip-worn accelerometry to predict walking speed in older adults: Results from the LIFE study.

Duane Corbett, Zhiguo Chen, Catrine Tudor-Locke, Matthew Buman, Anthony Marsh, Thomas Gill, Fang-Chi Hsu, Marco Pahor, Todd Manini

26. Association between structural changes in the brain and physical function in older women.

Amal Wanigatunga, Adam Woods, Mark Espeland, Brad Cannel, Julie Weitlauf, Ramon Casanova, Marian Limacher, Todd Manini

27. Validation of accelerometer data from Samsung Gear S

Smartwatch. Anis Davoudi, Matin Kheirkhahan, Sanjay Ranka, Todd Manini, Parisa Rashidi

28. Efficacy of fermented papaya preparation on markers of systemic inflammation: Methods and design for a randomized controlled trial.

Stephen Anton, Todd Manini, Christy Karabetian, Heather Mutchie, Christiaan Leeuwenburgh, Bhanuprasad Sandesara

29. Resveratrol to Enhance Vitality and Vigor in Elders (REVIVE): Methods and design for a randomized controlled trial.

Christiaan Leeuwenburgh, Todd Manini, Anna-Marie Joseph, Bhanuprasad Sandesara, Diane Barb, Michael Marsiske, Jonathan Shuster, Christy Karabetian, Stephen Anton

CANCER

30. Translatable RNA nanoparticles supplant dendritic cell vaccines in cellular immunotherapy. Elias Sayour, Gabriel De Leon, Christina Pham, Adam Grippin, Catherine Flores, Duane Mitchell

31. Gene Therapy for medullary thyroid cancer. Elim Kuo, Hazel Levy, Scott Rivkees, Arun Srivastava, Jacqueline Hobbs

32. Characterizing tumor microenvironment in 9L pontine glioma using MRI. Magdoo Kulam, Francisco Delgado, Ana Bohorquez, Paul Carney, Carlos Rinaldi, Malisa Samtinoranont, Thomas Mareci

33. TCRV β usage to predict tumor specificity against glioma. Catherine Flores, Christina Pham, Jeffrey Drake, Tyler Wildes, Rebecca Abraham, Duane Mitchell

35. MicroRNA 133b regulation of connective tissue growth factor: A novel mechanism in liver pathology. Altin Gjymishka, Liya Pi, Seh-Hoon Oh, Marda Jorgensen, Chen Liu, Yianni Protopapadakis, Ashnee Patel, Bryon Petersen

36. The involvement of connective tissue growth factor in nonalcoholic steatohepatitis and liver cancer development under diabetic condition. Liya Pi, Marda Jorgensen, Seh-Hoon Oh, Altin Gjymishka, Bryon Petersen

37. CENP-B protects centromere chromatin integrity by facilitating histone deposition via the H3.3-specific chaperone Daxx. Viacheslav Morozov, Serena Giovinazzi, Alexander Ishov

38. Variability in radiation therapy for rectal cancer between academic and community centers. Ahsan Raza, Sanda Tan, Christiana Shaw, Lindsey Goldstein, Ines Alamo, Atif Iqbal

39. Differences in treatment of rectal cancer by age and demographics: A national review. Ahsan Raza, Sanda Tan, Christiana Shaw, Lindsey Goldstein, Ines Alamo, Atif Iqbal

40. CCR2 deficiency or pharmacological antagonism impacts tumor progression and the influx of macrophages in murine gliomas. Defang Luo, Matthew Sarkisian, Jeremy McIntyre, Wenying Shi, Lawrence Kenyon, Jeffrey Harrison

- 41. Overcoming human myeloid leukemia cells resistance to myxoma virus oncolytic virotherapy by use of T cell carriers.** Ana Matos, Winnie Chan, Tom Hofland, Nancy Villa, Masmudur Rahman, Christopher Cogle, Grant McFadden
- 42. Enhanced mitochondrial respiration in slow-cycling glioma stem cells.** Krisha Amin, Alvin Vuong, Lan Hoang-Minh, Michael Schmoll, Jaimin Patel, Regina Martuscello, Benjamin Griffith, Vinata Vedam-Mai, Matthew Sarkisian, Brent Reynolds, Loic Deleyrolle
- 43. Slow-cycling tumor stem cell based immunotherapy for malignant glioma.** Fritz-Gerald Charles, Yuanzheng Gao, Kyle Dajac, Elias Sayour, Loic Deleyrolle
- 44. A combination natural product therapy attenuates common side effects associated with chemotherapy.** Rachel Freedman, Amanda Vozzola, Ben Griffith, Matt Bloom, Jennifer Owen, Brent Reynolds, Coy Heldermon, Loic Deleyrolle
- 45. Slow-dividing tumor initiating cells: Source of heterogeneity in glioma.** Nicholas Pasternack, Nancy Nabils, Benjamin Griffith, Kyle Dajac, Jaimin Patel, Michael Kladde, Brent Reynolds, Florian Siebzehrubl, Loic Deleyrolle
- 46. Mesothelin-specific chimeric antigen receptor-modified T cells (CARTs) targeting cholangiocarcinoma.** Yu Jiao, Jatuporn Sujitjooon, Lung-Ji Chang
- 47. Chimeric antigen receptor-modified T cells (CARTs) targeting small cell lung cancer.** Wei Zhu, Daniil Shabashvili, Monrat Chulenetra, Maria Zajac-Kaye, Frederic Kaye, Lung-Ji Chang
- 48. Epithelial plasticity exaggerates tobacco smoke-induced lung fibrosis.** Sarah Lulu, Anitha Shenoy, Huacheng Luo, Jianrong Lu
- 49. Combination of VEGF-A and PD-1 blockade may enhance antitumor efficacy in GBM.** Yu Long, Changlin Yang, Linchun Jin, Haitao Ge, Hongbo Bao, Catherine Flores, Zhiguo Lin, Duane Mitchell, Jianping Huang
- 50. A dominant effect of IDH mutations and related genetic alterations on tumor immunosuppression in low-grade glioma.** Luyan Mu, Changlin Yang, Linchun Jin, Yu Long, Haitao Ge, Hongbo Bao, Songsong Xia, Yifan Chang, Jiping Qi, Xiang Gao, Ying Ching Song, Gabriel De Leon, Elias Sayour, William Friedman, Duane Mitchell, Zhiguo Lin, Jianping Huang

51. CD70 - a key driver of chemokine-mediated immune suppression and indicator of negative prognosis in gliomas. Haitao Ge, Changlin Yang, Linchun Jin, Yu Long, Yifan Chang, Luyan Mu, Gabriel De Leon, Jeffrey Drake, Hongbo Bao, Yibo Yin, Qiong Wang, James Yang, William Friedman, Duane Mitchell, Zhiguo Lin, Jianping Huang

52. Molecular engineering of amplified tumor RNA-pulsed dendritic cells in adoptive cellular therapy targeting medulloblastoma and glioblastoma. Oleg Yegorov, Jeffrey Drake, Duane Mitchell

53. Dual mTOR kinase inhibitor reverses rapamycin resistance in prostate cancer cells. Yao Dai, Li Zhao, Dietmar Siemann

54. Targeted delivery of miR-302b using ephrin-A1 conjugated liposomal nanoparticles inhibits malignant pleural mesothelioma (MPM) tumor growth in mice. Nasreen Najmunnisa, Hung-Yen Lee, Frederic Kaye, Bridge Moudgil, Parvesh Sharma, William Clapp, Kamal Mohammed

55. Identifying novel therapeutic agents to specifically de-repress silenced tumor-suppressor genes. Benedetto DiCiaccio, Lei Zhou

56. New postoperative neurologic deficit abrogates survival benefit from increased extent of resection in glioblastoma patients. Edward De Leo, Joseph Abbatematteo, Paul Kubilis, Sasha Vaziri, Frank Bova, Duane Mitchell, Maryam Rahman

57. Myxoma virus therapy for small cell lung cancer (SCLC) using patient samples and a genetically engineered SCLC mouse model. Daniel Shabashvili, Masmudur Rahman, Patrick Kellish, Harald Messer, Mary Reinhard, Grant McFadden, Frederic Kaye, Maria Zajac-Kaye

58. Interactions of family history of breast cancer with radiotherapy in relation to breast cancer-free survival in a population-based breast cancer registry. Danmeng Li, Volker Mai, Travis Gerke, Lusine Yaghjian

59. Effect of exogenous HGF on c-Met inhibition in in vitro metastatic functions. Veronica Hughes, Dietmar Siemann

60. The impact of aerobic exercise on oxygenation and vascularity in breast cancer models. Jennifer Wiggins, Jennifer Lee, Lori Rice, Dietmar Siemann

61. Potential regulation of polyamine metabolism in breast cancer by death domain associated protein DAXX. Iqbal Mahmud, Timothy Garrett, Diaqing Liao

62. Predicting MDS response to drug therapies based on a new method of interpreting the MDS mutanome. Cindy Medina, Leylah Drusbosky, Myron Chang, Shireen Vali, Ansu Kumar, Neeraj Kumar Singh, Taher Abbasi, Mikkael Sekeres, Mar Mallo, Francesc Sole, Rafael Bejar, Christopher Cogle

63. Gene mutations in MDS associating with peripheral blood count abnormalities. Shannon Somer Stockton, Vasu Malhotra, Xiaomin Lu, Maya Thangavelu, Maher Albitar, Christopher Cogle

64. Pilot study of early markers of radiation-induced cardiac injury in patients with left-sided breast cancer receiving photon or proton therapy. Shruti Siva Kumar, Alexandria Waler, Julie Bradley, Christopher Klassen, Walter O'Dell

65. Targeting replication stress for colorectal cancer therapy. Satya Narayan, Ritika Sharma, Aruna Jaiswal, Hans Ghayee, Robert Hromas, Jay Sharma, Jitesh Jani, Shantu Amin, Arun Sharma

66. Expression of innate immune proteins in human gliomas. Stephanie Adamczak, Maryam Rahman, Jesse Kresak

67. Snail and E-Cadherin expression in Primary Cutaneous Melanoma – Providing insights into the correlation between BRAF and Epithelial-Mesenchymal Transition. Brendon Mitchell, Dominick Leone, John Feller, Noah Frydenlund, Shi Yang, Meera Mahalingam

68. β Arr1 regulates androgen and glucocorticoid receptors signaling in castration-resistant prostate cancer. Hamsa Thayelee Purayil, Joseph Black, Iqbal Mahmud, Yehia Daaka

69. Human colorectal cancer-associated biofilms promote tumorigenesis in susceptible mice. Sarah Tomkovich, Christine Dejea, Kathryn Winglee, Jillian Pope, Josee Gauthier, Danielle Ferraguti, Xiaolun Sun, Marcus Muehlbauer, Ernesto Perez-Chanona, Anthony Fodor, Cynthia Sears, Christian Jobin

70. CRTC1 activation by nuclear import links LKB1-null lung adenocarcinoma and lung mucoepidermoid cancers. Chunxia Cao, Zichao Zhang, Min Zhang, Yue Jiang, Zirong Chen, W. Douglas Cress, Maria Zajac-Kaye, Lizi Wu, Frederic Kaye

71. Autophagy and prostate cancer. Debra Akin, Jae-Sung Kim, William Dunn

- 72. Cachexia mediates alterations in the neuromuscular junction in a murine model of colorectal cancer.** A. Gary Todd, Sarah Judge, Lauren Vaught, Andrew Judge, Darin Falk
- 73. Increased PKR expression inhibits differentiation of hematopoietic stem cells.** Michael Byrne, Xiaodong Cheng, Mohini Patel, Zeel Patel, Amalin Asous, W. Stratford May, Richard Bennett
- 74. Role of histone deacetylases in regulating cancer cell stemness and survival.** Alta Johnson, Suming Huang, Yi Qiu
- 75. Leukemia stem cell: Is it the true reason for the drug resistance?** Bowen Yan, Suming Huang, Yi Qiu
- 76. Exploring the importance of cancer pathways by meta-analysis of differential protein expression networks in three different cancers.** Sinjini Sikdar, Somnath Datta, Susmita Datta
- 77. A novel in vitro model to study the effects of alcohol in HCC.** William Puszyk, Michael Paiva, Ryan Hlady, Qunfeng Wu, Michael Burns, Marieta Heaton, Keith Robertson, Chen Liu
- 78. Inhibition of PLK1 induces growth arrest and apoptosis in tumorigenic OS cells.** Maria Guijarro, Elham Nasri, Padraic Levings, Steve Ghivizzani, C. Parker Gibbs
- 79. Forced induction of differentiation in osteosarcoma tumor initiating cells.** Margaret White, E.M. Viktoria Hyddmark, Ali Zarezadeh, Elham Nasri, Maria Guijarro, Padraic Levings, Glyn Palmer, Steve Ghivizzani, C. Parker Gibbs
- 80. Epigenetic reprogramming of osteosarcoma tumor initiating cells alters histologic and metastatic phenotype.** E.M. Viktoria Hyddmark, Padraic Levings, Margaret White, Ali Zarezadeh, Elham Nasri, Maria Guijarro, Glyn Palmer, Steve Ghivizzani, C. Parker Gibbs
- 81. Cyclin-dependent kinase 2 is an ideal target for ovary tumors with elevated cyclin E1 expression.** Liu Yang, Shuang Huang
- 82. SSBs coordinate DNA replication and repair.** Lauren Douma, Jaclyn Hayner, Linda Bloom
- 83. Ablation of PCM1 increases glioblastoma cell death and sensitivity to temozolomide.** Lan Hoang-Minh, Loic Deleyrolle, Nari Nakamura, Alexander Parker, Regina Martuscello, Brent Reynolds, Matthew Sarkisian

84. Detection of tumor antigen-specific immune responses in patients with hepatocellular carcinoma. Miguel Ararat, Todd Brusko, Yiling Xu, Thu Le Trinh, Wen Yeh, Mark Atkinson, Clive Wasserfall, Roniel Cabrera

GENETICS

85. Role of LANA N-terminal chromosome binding site (aa 5-15) in transcriptional control and episome maintenance. Vaibhav Jain, Brian Krueger, Ekaterina Gavrilova, Peter Turner, Peter Medveczky, Alexander Ishov, Rolf Renne

86. C9orf72 BAC mouse model with motor deficits and neurodegenerative features of ALS/FTD. Yuanjing Liu, Amrutha Pattamatta, Tao Zu, Tammy Reid, Olgert Bardhi, David Borchelt, Anthony Yachnis, Laura Ranum

87. A scalable recombinant HSV-based manufacturing system for production of highly potent adeno-associated type 9 vectors. Laura Adamson-Small, Eugene Krasnogorskyi, Mark Potter, Brian Cleaver, Barry Byrne, Nathalie Clément

88. Decellularized embryonic hearts to investigate congenital heart disease. Hassan Ashraf, Christopher Lacko, Rebecca Wachs, Christine Schmidt, Hideko Kasahara

89. AAV9 gene transfer rescued heart failure of cardiac myosin light chain kinase knockout mice. James Fleming, Manas Biswal, Alfred Lewin, Hideko Kasahara

90. Direct protein delivery of zinc finger DNA-binding domains as a potential therapy for hemoglobinopathies. Mir Hossain, Jared Stees, Yong Shen, Nancy Nabilsi, Isaac Knudson, Shaleen Thakur, Jorg Bungert

91. Light-inducible control of DNA transcription with spatiotemporal resolution. Lorena De Mena, Yan Zhang, Pedro Fernandez-Funez, Diego Rincon-Limas

92. Serpin reactive center loop gene therapy for liver damage in alpha1 antitrypsin deficiency. Yuanqing Lu, Rejean Wang, Mark Brantly

93. AAV mediated cancer targeting: Systemic trafficking and tumor specificity. Yuan Lu, Damien Marsic, Chen Ling, Maria Guijarro, Padraic Levings, Glyn Palmer, Anthony Dacanay, Rachael Watson-Levings, E.M. Viktoria Hyddmark, Margaret White, Sergei Zolotukhin, Steven Ghivizzani

- 94. Single-cell epigenetics in polyploid and diploid cells: The search for cell identity.** Emily Dabe, Andrea Kohn, Leonid Moroz
- 95. Genomics and epigenomics of complete regeneration of elementary brains and wound healing.** Rachel Sanford, Andrea Kohn, Leonid Moroz
- 96. Epitranscriptomic landscape of single neurons: Insights in the memory mechanisms.** Leonid Moroz, Maria Basanta Sanchez, Andrea Kohn
- 97. Genetic mutations in cardiomyopathy: Pathogenicity, penetrance and expressivity.** Alejandro Sanoja, F. Jay Fricker, Hua Li, Peggy Wallace
- 98. Intrinsic increased ACE2 expression protects spiny mouse *Acomys cahirinus* against ischemic-induced cardiac dysfunction.** YanFei Qi, Ashok Kumar, Juan Zhang, Ravneet Vohra, Glenn Walter, Malcolm Maden, Michael Katovich, Mohan Raizada, Carl Pepine
- 99. Hepatic AAV gene transfer of cytoplasmic transgene induces transgene product-specific T cell activation initially in the liver and celiac lymph node preceding Treg induction.** George Perrin, Roland Herzog
- 100. Clotting Factor VIII overexpression shows signs of ER stress but doesn't cause toxicity in gene therapy setting.** Irene Zolotukhin, David Markusic, Brett Palaschak, Meera Srikanthan, Roland Herzog
- 101. Comparative development of the human and mouse urethra.** Brooke Armfield, Kari Means, Martin Cohn
- 102. Analysis of Shh signaling in the external genitalia of a cilia mutant.** Ana Enriquez, Christine Larkins, Martin Cohn
- 103. Formation of the vaginal opening: Sexual differentiation of the urethra and the role of androgen.** Christine Larkins, Ana Enriquez, Martin Cohn
- 104. Loss of RhoA in urethral epithelium disrupts external genital development.** Kelsey Lewis, Martin Cohn
- 105. The effects of the endocrine disruptor vinclozolin on the sexually dimorphic 2D:4D ratio.** Lindsey North, Kelsey Lewis, Martin Cohn
- 106. The role of glucocorticoid receptor signaling pathway in adeno-associated virus 2 infection.** Chen Ling, Yuan Lu, Jun Li, Daniel Zhang, George Aslanidi, Changquan Ling, Arun Srivastava

- 107. CRISPR/Cas-mediated modification of MEGF10 produces a novel model for the study of MEGF10 myopathy.** Daphney Clermont, Madhurima Saha, Hemakumar Mutra Reddy, Peter Kang
- 108. Development of optimized AAV serotype vectors for the potential gene therapy of cystic fibrosis.** Yanerys Colon-Cortes, Prativa Sharma, Chen Ling, Mutasim Abu-Hasan, Arun Srivastava, George Aslanidi
- 109. Pharmacogenetic association of β 1-adrenergic receptor Ser49Gly polymorphism with outcomes in the Secondary Prevention of Small Subcortical Strokes (SPS3) trial.** Oyunbileg Magvanjav, Caitrin McDonough, Yan Gong, Leslie McClure, Robert Talbert, Richard Horenstein, Braxton Mitchell, Alan Shuldiner, Oscar Benavente, Julie Johnson
- 110. The use of miR-122 and its target sequence in adeno-associated virus-mediated cytotoxic gene therapy.** Jun Li, Zifei Yin, Daniel Zhang, Georgy Aslanidi, Arun Srivastava, Changquan Ling, Chen Ling
- 111. Comparison of the effects of the propionate on the tricarboxylic acid (TCA) cycle using different measurements.** Alexander Kirpich, Mukundan Ragavan, Matthew Merritt, Lauren McIntyre
- 112. Genetic variant discovery in *S. aureus* MSCRAMMs by whole genome sequencing.** Alison Morse, Steven Lower, Magnus Hook, Vance Fowler, Lauren McIntyre
- 113. Population genomics of *Drosophila simulans*.** Felicia New, Lauren McIntyre, Sergey Nuzhdin, Sarah Signor
- 114. A case-control analysis of alternative splicing in lymphocytes in type 1 diabetes.** Jeremy Newman, Mark Atkinson, Stephen Rich, Patrick Concannon, Lauren McIntyre
- 115. The role of the pyruvate dehydrogenase kinase 4 (PDK4) gene mutation in the development of dilated cardiomyopathy in Doberman Pinschers and potential application of cardiac gene therapy.** Luiz Bolfer, Amara Estrada, Brandy Winter, Kathryn Taggart, Francisco Lourenço, Naohiro Terada, Barry Byrne, Thomas Conlon, Christina Pacak
- 116. AAV-mediated gene delivery of TAZ for the correction mitochondrial dysfunction in Barth syndrome patient induced pluripotent stem cell models.** Amy Donate, Manashwi Ramanathan, Katherine Santostefano, Skylar Rizzo, Naohiro Terada, Barry Byrne, Christina Pacak

117. AAV-MitoTimer to assess mitochondrial turnover *in vivo* and *in vitro*. Bennett Gosiker, Skylar Rizzo, Amy Donate, Christina Pacak

118. Characterizing soleus function in a post-hypoxic mouse model of Barth syndrome. Michael Jones, Skylar Rizzo, Amy Donate, Peter Kang, Christina Pacak

119. Mitochondrial structural defects in Barth syndrome. Manashwi Ramanathan, Amy Donate, Christina Pacak

120. Genotype/phenotype correlation of cellular function and AAV-mediated gene delivery to treat Xeroderma Pigmentosum - Cockayne Syndrome (XP-CS). Skylar Rizzo, Amy Donate, Michael Jones, Kelsey Manko, Katherine Santostefano, Nao Terada, Fowzan Alkuraya, Peter Kang, Christina Pacak

IMMUNOLOGY, HEMATOLOGY, AND STEM CELLS

121. Utility of dual-color silver in situ hybridization and mRNA chromogenic in situ hybridization in adipocytic tumor MDM2 assessment. Jong Taek Kim, John Reith, Wonwoo Shon

122. Nuclear TFE3 immunoreactivity is present in angiomatoid fibrous histiocytomas but not in other cutaneous histiocytomas. Dianne Torrence, Karen Fritchie, John Reith, William Sukov, Gert Smalberger, Wonwoo Shon

123. Detection of somatic mutations in secondary tumors associated with nevus sebaceus by targeted next generation sequencing. Jong Taek Kim, Kimberly Newsom, Wonwoo Shon

124. Laser microdissection and mass spectrometric-based proteomic analysis of sclerotic bodies (“elastocollagenous balls”) in nephrogenic systemic fibrosis. Naziheh Assarzadegan, Michael Imber, Patrick Vanderboom, Cristine Charlesworth, Wonwoo Shon

125. Hectd3 determines the encephalogenic potential of Th17 cells. Jonathan Cho, Samira Mansouri, Rejean Wang, Danielle Califano, Mohammad Uddin, Kyle Lorentsen, Mark Brantly, Dorina Avram

126. Transcription factor Bcl11b governs the development and effector function of iNKT cell populations. Mohammad Uddin, Dil Sultana, Kyle Lorentsen, Jonathan Cho, Mariana Kirst, Mark Brantly, Danielle Califano, Derek Sant'Angelo, Dorina Avram

- 127. Regulation of interferon pathways by ubiquitin specific proteinase**
18. Daniel Aldridge, Jared Taylor, Melanie Cash, Mark Wallet
- 128. Type 1 diabetes in a dish.** Lucas Armitage, Brittney Newby, Katherine Santostefano, Melanie Cash, Jing Chen, Naohiro Terada, Alexi Savinov, Todd Brusko, Clayton Mathews, Mark Wallet
- 129. iPSC-derived macrophages: A tool for studying HIV-1 persistence.**
Jared Taylor, Daniel Aldridge, Melanie Cash, Katherine Santostefano, Lucas Armitage, Naohiro Terada, Mark Wallet
- 130. Mechanism of the blood pressure response to a novel vascular disrupting combretastatin (OXi4503).** Mahan Shahrivar, Elizabeth Wise, Leslie Pettiford, David Chaplin, Carl Pepine, Christopher Cogle
- 131. HLA-C*08:02/16:02 versus C*05:01/16:01, ambiguous pairs particularly susceptible to typing error.** Steven Goldstein, Maxim Norkin, Mai Ta
- 132. Effect of methotrexate on CD4+ T cell metabolism and function.**
Timothy Chong, Ramya Sivakumar, Laurence Morel
- 133. Thromboelastography measurement of apheresis platelets functionality exposed to lower than standard temperatures.** Miriam Duque, Neil Harris, Paola Portillo, Peter Pelletier
- 134. A GMP compatible protocol for the ex vivo expansion of human regulatory T cells from cryopreserved umbilical cord blood.** Ashley Bushdorf, Howard Seay, Kristi Balavage, Amy Putnam, Emma Rosenau, John Wingard, Kate Girard, Morey Kraus, Jeff Bluestone, Michael Haller, Todd Brusko
- 135. Redefining the extracellular markers of human regulatory T cells improves research methods and has important implications for T1DM cellular therapies.** Leeana Peters, Howard Seay, Wen-I Yeh, Todd Brusko
- 136. Minimizing post-transplant relapse: A phase I, dose escalation study of Decitabine in pediatric and adult patients with high risk hematologic malignancies post allogeneic stem cell transplantation.**
Abigail Schirmer, Howard Seay, Paul Castillo, Todd Brusko
- 137. The type 1 diabetes-associated co-stimulatory molecule CD226 impacts lymphocyte frequency and CD8+ T cell function.** Wen-I Yeh, Howard Seay, Brittney Newby, Clayton Mathews, Todd Brusko

138. A detailed analysis of peripheral blood cytokines 2-3 weeks after acute myocardial infarction: IL-6-related impairment of bone marrow function. Mahan Shahrivari, Elizabeth Wise, Micheline Resende, Jonathan Shuster, Jingnan Zhang, Roberto Bolli, John Cooke, Ray Ebert, David Feldman, Josh Hare, Tim Henry, Aisha Khan, Doris Taylor, Jay Traverse, Joe Wu, Phil Yang, Carl Pepine, Christopher Cogle

139. A combination hydrogel microparticle matrix to deliver autoantigen and adjuvant utilizing the NOD mouse to prevent type 1 diabetes. Young Mee Yoon, Clive Wasserfall, Jamal Lewis, Martha Campbell-Thompson, Benjamin Keselowsky, Mark Atkinson

140. Type 1 diabetes results in changes in neutrophils, but not neutrophilic enzymes. Andrea Lin, Kieran McGrail, Mark Brantly, Mark Atkinson, Desmond Schatz, Michael Haller, Clayton Mathews

141. Bone marrow stem cell niche dysfunction in human SLE. Chao Xie, Yuan Zhang, Li-Jun Yang

142. Building an induced pluripotent stem cell (iPSC)-based model system to test genetic variants of Resistant Hypertension (RHTN). Nihal El Rouby, Katherine Santostefano, Natalie Fredette, Niki Biel, Fang Bai, Shouguang Jin, Mark Wallet, Jeffrey Harrison, Caitrin McDonough, Yan Gong, Carl Pepine, Atsushi Takahashi, Toshihiro Tanaka, Michiaki Kubo, Rhonda Cooper-DeHoff, Naohiro Terada, Julie Johnson

143. Generation of endothelial cells from induced pluripotent stem cells. Natalie Fredette, Katherine Santostefano, Naohiro Terada

144. LIGHT programs activated CD8 T cells to survive and become memory cells in response to a viral pathogen. Pritesh Desai, Georges Abboud, Farhad Dastmalchi, Jessica Stanfield, Carl Ware, Michael Croft, Jianxun Song, Tarun Hutchinson, Shahram Salek-Ardakani

145. Human newborns have a dysfunctional innate immune response when compared to healthy adults. Brittany Mathias, Jaimar Rincon, Juan Mira, James Wynn, Philip Efron, Lyle Moldawer, Shawn Larson

146. Alum vaccination improves myelopoiesis and phagocytosis in neonatal polymicrobial sepsis. Jaimar Rincon, Angela Cuenca, Brittany Mathias, Dina Nacionales, Ricardo Ungaro, Philip Efron, Lyle Moldawer, Shawn Larson

147. Impaired phagocytosis of apoptotic cells in pristane-induced lupus simulates the clearance defect in human SLE. Shuhong Han, Haoyang Zhuang, Ravil Khaybullin, Stepan Shumyak, Anan Afaneh, Xin Qi, Lijun Yang, Westley Reeves

INFECTIOUS DISEASES

148. PA3297 counters antimicrobial effect of azithromycin in *Pseudomonas aeruginosa*. Hao Tan, Guangtao Huang, Lu Zhang, Yongxin Jin, Weihui Wu, Shouguang Jin

149. Co-infections with hepatitis C virus and tuberculosis among persons living with HIV in an ongoing Florida cohort. Robert Cook, Alexander Zirulnik, Chukwuemeka Okafor, Akemi Wijayabahu, Jennifer Janelle, Ezekiel Ojewale

150. Metabolites from anaerobic microbes attenuate mTOR signaling and protect against *Campylobacteriosis* in *Il10*^{-/-} mice. Xiaolun Sun, Christian Jobin

151. Co-evolutionary analysis of proteins forming viroplasm-like structures during rotaviral infection. Nabil Abid, David Nolan, Marco Salemi

152. Transcriptome analysis of the frontal lobe in SIV infected macaques to examine effects of SIV brain infection and SIV encephalitis. James Jarad Dollar, Jae Min, David Nolan, Carla Mavian, David Moraga Amador, Marco Salemi

153. MALDI-TOF mass spectrometry and *blakpc* gene phylogenetic analysis of an outbreak of carbapenem resistant *Klebsiella pneumoniae* strains. Marta Fogolari, Eleonora Cella, Silvia Angeletti, Alessandra Lo Presti, Alessandra Avola, Lucia De Florio, Massimiliano Andrea Vitali, Giordano Dicuonzo, Massimo Ciccozzi, Marco Salemi

154. Mapping HIV integration sites using the ISLA assay. Samuel Maruniak, Andrew McAvoy, James Jarad Dollar, David Nolan, Rebecca Rose, Susanna Lamers, Michael McGrath, Marco Salemi

155. Potential reservoirs of replicating HIV-1 found in patients who died with no detectable viral load while on effective drug regimens. Andrew McAvoy, Samuel Maruniak, James Jarad Dollar, David Nolan, Rebecca Rose, Susanna Lamers, Michael McGrath, Marco Salemi

156. Antifungal potential of antimicrobial peptide mimetics in a mouse model of disseminated Candidiasis. Masoom Chowdhury, Katie Freeman, Gill Diamond, Richard Scott, Lisa Ryan

157. Assessment of the Streptococcus milleri group on adenoid tissues. Jerin Joseph, Patrick Antonelli, William Collins, Rodrigo Silva, Carolyn Dirain

158. HIV is associated with increased rate of single positive QuantiFERON®-TB Gold In-Tube results in Florida. Kaitlyn Wright, Livia Sura, Michael Lauzardo

159. Norovirus antagonism of B cell antigen presentation results in impaired control of acute infection. Shu Zhu, Melissa Jones, Danielle Hickman, Shuhong Han, Westley Reeves, Stephanie Karst

160. Clinical and microbiological impact of inhaled tobramycin treatment on cystic fibrosis patients with Pseudomonas aeruginosa. Francesca Dickhaus, Mutasim Abu Hasan, Elizabeth Tremblay, Kenneth Klinker, Kenneth Rand, Stacy Beal

161. MRSA infection prompts necroptosis in pleural mesothelial cells via EphA2 signaling but EphA2 absence triggers apoptosis. Tridib Ganguly, Nasreen Najmunnisa, Satindra Gahlot, Hung-Yen Lee, William Clapp, Kamal Mohammed

162. Uropathogenic E. coli mechanisms of intracellular invasion. Allyson Shea, WanJu Kim, Yehia Daaka

163. Semi-Quantitative patient data from a multiplex Respiratory Viral Panel (RVP): Can we learn something from population-based study? Kenneth Rand, Maura Pieretti, Rodney Arcenas, Stacy Beal, Herbert Houck, Emma Boslet, John Lednický

164. The global spread of Middle East Respiratory Syndrome: An analysis fusing traditional epidemiological tracing and molecular phylodynamics. Jae Min, Eleonora Cella, Massimo Ciccozzi, Antonello Pelosi, Marco Salemi, Mattia Prosperi

165. Live recombinant attenuated salmonella vaccines against Mycobacterium tuberculosis. Shilpa Sanapala, Shifeng Wang, Blessing Okon, Kitdorlang Dkhar, Christie Hay, Roy Curtiss III, Josephine Clark-Curtiss

166. Biofilm evaluation on explanted orthopedic implants. Alessandra DiMare, Daniel Gibson

167. Testing the anti-proteinase activity of a surfactant. Sunyoung Jeong, Gregory Schultz, Daniel Gibson

168. Myxoma virus M029 and Vaccinia E3 are orthologous dsRNA-binding proteins that possess similar host-range functions but differ in their ability to block type I IFN. Masmudur Rahman, Eugenie Bagdassarian, Mohamed Ali, Grant McFadden

169. An uncommon cause of acute encephalopathy in liver cirrhosis. Monique Dieuviel, John Malaty

170. Development of a novel rat model of polymicrobial peri-implantitis. Theofilos Koutouzis, Christie Eastman, Sasanka Chukkapalli, Hannu Larjava, Lakshmya Kesavalu

171. Reduction of biofilm bacteria grown on pig skin explants by a topical formulation containing components generally recognized as safe. Qingping Yang, Richard Stockel, Daniel Gibson, Gregory Schultz

172. Pre-clinical development of gene therapy against latent herpes simplex virus 1 infection. Dane Phelan, Zachary Watson, Monica Ertel, Donna Neumann, Edward Kennedy, Bryan Cullen, David Bloom

INFLAMMATION, VASCULATURE, AND TRAUMA

173. Vascular endothelial growth factor (VEGF) and its receptors in tissue repair following lung contusion and chronic stress. Andrew Thomson, Ines Alamo, Harry Ramos, Kolenkode Kannan, Tyler Loftus, Alicia Mohr

174. Peptidoglycan-polysaccharide model of Crohn's disease displays an early response to anti-TNF treatment for inflammation but has delayed elevation of Th17-related inflammatory cytokines. Christopher Broxson, Laura Reingold, Phyllissa Schmiedlin-Ren, Scott Owens, Ellen Zimmermann

175. Predicting disease-related complications and adverse outcomes in patients with Crohn's disease. Naueen Chaudhry, Michael Rivero, Maher Homsy, Patricia Moser, Joseph Grajo, Drashana Punglia, Ellen Zimmermann

176. Dysfunctional high density lipoprotein may be predictive of adverse outcomes in severe sepsis. Taylor Robinson, Faheem Guirgis, Sunita Dodani, Jennifer Reynolds, Colleen Kalynych, Lyle Moldawer, Christiaan Leeuwenburgh, Srinivasa Reddy, Frederick Moore

177. Cross-class serine protease inhibitor serp-2 blocks liver ischemia reperfusion injury. Sriram Ambadapadi, Hao Chen, Jorge Fuentes, Sufi Morshed, Jennifer Davids, Bruno Marques, Alexandra Lucas

178. Selective donor endothelial heparan sulfate modifying enzyme ndst1 deletion significantly blocks rejection after renal transplant. Sriram Ambadapadi, Hao Chen, Dara Wakefield, Sufi Morshed, William Clapp, Alexandra Lucas

179. Gridlock of early vascular development to aortic coarctation. Changzoon Chun, Heejae Chun, Mark Segal

180. Effects of IFN-I on blood-derived SMPC differentiation and arterial wall. Yanpeng Diao, Rajesh Mohandas, Pui Lee, Zhiyu Liu, Larysa Sautina, Wei Mu, Shiyu Li, Xuerong Wen, Byron Croker, Mark Segal

181. Role of calpastatin in ischemic aged livers. Joseph Flores-Toro, Thomas Biel, Sooyeon Lee, Min-Ho Lee, Sung-Kook Chun, Joseph Dean, Catherine Miney, Ivan Zendejas, Kevin Behrns, Jae-Sung Kim

182. Fluorouracil sensitizes hepatocytes to ischemia/reperfusion injury. Kristina Go, Sooyeon Lee, Rebecca U, Ivan Zendejas, Kevin Behrns, Jae-Sung Kim

183. Critical role of Sirtuin 1-Mitofusin 2 axis in ischemia/reperfusion injury in aged livers. Sooyeon Lee, Rebecca U, Kristina Go, Joseph Flores-Toro, Thomas Biel, Ming-Jim Yang, Catherine Miney, Ivan Zendejas, Kevin Behrns, Jae-Sung Kim

184. SDF-CXCR4 axis as a potential means of increasing engraftment of pluripotent stem cell derivatives into the structurally normal liver. Ming-Jim Yang, Jonathan Chu, Luis Concepcion, Naiyou Liu, Jeffrey Fair, Kevin Behrns, Jae-Sung Kim

185. Nicotinic activity of arecoline, the psychoactive element of “betel nuts”, suggests a basis for habitual use and anti-inflammatory activity. Nicole Horenstein, Clare Stokes, Roger Papke

186. Alveolar macrophage-mediated efferocytosis in Alpha-1 antitrypsin deficiency. Upasana Parthasarathy, Karina Krotova, Mark Brantly

187. Nanoparticle-enhanced binding of a layered ECM scaffold for vascular tissue regeneration. Leslie Goldberg, Herbert Cuevas, Scott Berceci, Peter McFetridge

188. Significant impact of fibroproliferative microenvironment in orthopaedic combat blast induced heterotopic ossification. Youngmi Ji, Cris Min, Gregory Christopherson, Phillip Hwang, Tiffani Slaughter, Sarah Rhim, Yong Park, Richard Leapman, Vyomesh Patel, Leon Nesti

189. Therapeutic targets for Duchenne muscular dystrophy. David Hammers, Margaret Sleeper, Sean Forbes, Glenn Walter, H. Lee Sweeney

190. Activin signaling: A therapeutic target for musculoskeletal diseases. Melissa Merscham, David Hammers, H. Lee Sweeney

191. Model of altered circulation time and wall shear stress in arteriovenous fistula. Liza Flory Laquian, Yong He, Scott Berceci

192. Hemodynamic perturbations do not correlate with hand dysfunction after hemodialysis fistula placement. Jonathan Rehfuss, Sarah Barbey, Paul Kubilis, Adam Beck, Thomas Huber, Scott Berceci, Salvatore Scali

193. Computational modeling of the aortic arch: Evaluation of endovascular device design. Rosamaria Tricarico, Yong He, Liza Laquian, Roger Tran-Son-Tay, Adam Beck, Scott Berceci

194. Novel usefulness of cylinder test for assessing long-term sensorimotor dysfunction in mild ischemic stroke mouse model. Lei Liu, Matthew Weider, Yasmin Dweik, Sylvain Doré

195. Deletion of the hemopexin or heme oxygenase-2 gene aggravates brain injury following stroma-free hemoglobin-induced intracerebral hemorrhage. Bryan Slootsky, Bo Ma, Emanuela Tolosano, Sylvain Doré

196. Identifying the potential substrates of polymerase disulfide isomerase. Katherine Baker, Jack Stopa, Bruce Furie

METABOLISM AND METABOLIC DISEASES

197. Role of DNMT3a in regulation of gene expression, morphology, and function of embryonic cardiomyocytes. Xiefan Fang, Ryan Poulsen, John Wang-Hu, Nicholas Calvo, Chelsey Simmons, Scott Rivkees, Christopher Wendler

- 198. In utero caffeine exposure induces transgenerational effects on the adult heart.** Xiefan Fang, Ryan Poulsen, Scott Rivkees, Christopher Wendler
- 199. Global metabolomics of the placenta over 24 hrs.** Anushka Chelliah, Jacquelyn Walejko, Kelly Brennan, Maureen Keller-Wood, Arthur Edison, Anthony Gregg
- 200. Sex differences in renal sodium transporter gene expression.** Ravi Patel, Kristen Solocinski, Kit-Yan Cheng, Michelle Gumz
- 201. Circadian Inc to EDN1-AS: A novel, long, non-coding RNA antisense to the EDN1 gene.** Kristen Solocinski, Sarah Barilovits, Amanda Welch, Kit-Yan Cheng, Jeanette Lynch, Charles Wingo, Brian Cain, Michelle Gumz
- 202. Acid-base regulation of intestinal oxalate transport.** Jonathan Whittamore, Marguerite Hatch
- 203. Estrogen and brain development: Outcomes for girls with central precocious puberty.** Ratna Acharya, Joe Monir, Song Lai, Janet Silverstein, David Janicke, Sara Jo Nixon, Sarah Landsman
- 204. Complications of nonalcoholic fatty liver disease.** Vikas Khullar, Alpna Limaye, Amitabh Suman
- 205. Lipid abnormalities in mice deficient in peripheral myelin protein 22.** Ye Zhou, Alex Fethiere, Karla Arrendondo, Hagai Tavori, Sergio Fazio, Lucia Notterpek
- 206. A novel model of Pompe disease with accelerated cardiorespiratory phenotype.** A. Gary Todd, Lauren Vaught, Brenden Doyle, Glenn Walter, Lucia Notterpek, David Fuller, Barry Byrne, Darin Falk
- 207. Liver specific depletion of mitochondrial ATP transporter enhances uncoupled respiration and prevents fatty liver and obesity.** Joonseok Cho, Yujian Zhang, Nishanth E Sunny, Jae-Sung Kim, Takayuki Shiratsuchi, S. Paul Oh, Young Jae Lee, Naohiro Terada
- 208. Efficiency of AAV9 neural transduction after intramuscular administration.** Emmanuelle Lavassani, Kristina Fernandez, Marda Jorgensen, Denise Cloutier, David Fuller, Manuela Corti, Barry Byrne
- 209. ENaC activity in the Cortical Collecting Duct of HK α 1 H,K-ATPase knockout mice is uncoupled from Na intake.** James Stockand, Elena Mironova, Vladislav Bugaj, I. Jeanette Lynch, Michelle Gumz, Charles Wingo

210. iBAT thermogenesis is not required for central leptin signaling-induced body weight loss. Isabelle Côté, Yasemin Sakarya, Nihal Tümer, Philip Scarpace

211. Early use of plasma adiponectin helps identify responders to Pioglitazone (PIO) therapy in nonalcoholic steatohepatitis (NASH). Fernando Bril, Paola Portillo Sanchez, Nishanth Sunny, Srilaxmi Kalavalapalli, Diane Biernacki, Michelle Weber, Amitabh Suman, Kenneth Cusi

212. Three hundred sixty degree gastric band erosion still fraught with misfortune: The culprit of gastric atony leading to massive dilation and mucosal necrosis. Sugong Chen, Martin Rosenthal, Andrew Martin, Jeffrey Friedman

213. The molecular-clock and MyoD1 work in a synergistic fashion to promote robust circadian expression of Titin-cap in skeletal muscle. Brian Hodge, Xiping Zhang, Nick Arnold, Karyn Esser

214. Changes in titin isoform composition following knockout of Bmal1, a core molecular clock factor, in skeletal muscle. Lance Riley, Xiping Zhang, Wei Guo, Karyn Esser

215. Evaluating autophagy in Pompe disease following gene therapy. Angela McCall, Sylvia Stankov, Darin Falk, Barry Byrne

216. Gene therapy correction of frataxin deficiency in a novel mouse model of Friedreich's ataxia. Monica Tschosik, Thiago Love-Leonor, Manuela Corti, Barry Byrne

NEUROMEDICINE AND NEUROMUSCULAR DISEASE

217. Determining extracellular white matter conductivity using diffusion MRI. Manish Amin, Aditya Kasinadhuni, Luis Perez, Thomas Mareci

218. Magnetic field measurement in rat's spinal cord: A study of magnetic anisotropy in white matter. Guita Banan, Thomas Mareci

219. Comparison of MR susceptibility artifacts due to different electrode materials for use in Magnetic Resonance Electrical Impedance Tomography. Aditya Kumar Kasinadhuni, Chris Anderson, Zhou Junli, Rosalind Sadleir, Paul Carney, Thomas Mareci

220. Tetraopenerine ant alkaloids bind to the phencyclidine site in the muscle nicotinic receptor ion channel. Liren Xue, Ron Leong, Anne Rouchaud, Hong Xing, Jean-Claude Braekman, William Kem

221. Analysis of Btdb9 mutant mice, a model of RLS, using manganese-enhanced MRI. Juan Davila, Mark DeAndrade, Marcelo Febo, Luis Colon-Perez, Yuqing Li

222. Characterization of a DYT1 dystonia mouse model with selective knockout of torsinA in the dopamine receptor 2-expressing cells. Kelly Dexter, Fumiaki Yokoi, Melinda Gerard, Matthew Villanueva, Carly Misztal, Patrick Lynch, Yuqing Li

223. Preliminary characterization of Meis1^{+/tm2Ngc} knockout mice as a model for Restless Legs Syndrome. Bryan Salvato, Mark DeAndrade, Yuqing Li

224. Electrophysiological alterations of the cerebellar Purkinje cells in DYT1 dystonia mouse models. Hong Xing, Huanxin Chen, Fumiaki Yokoi, Kelly Dexter, Ariel Ferguson, Ashley Baker, Leslie Castro, Ziyad Barghouthy, Juan del Calvo, Steven Roper, Yuqing Li

225. Electrophysiological alterations of the striatal cholinergic interneurons in Dyt1 Δ GAG heterozygous knock-in mice. Fumiaki Yokoi, Hong Xing, Kelly Dexter, Raul Alsina, Iakov Efimenko, Shiv Krishnaswamy, Melinda Gerard, Matthew Villanueva, Carly Misztal, Patrick Lynch, Ariel Ferguson, Ashley Baker, Leslie Castro, Ziyad Barghouthy, Juan del Calvo, Steven Roper, Yuqing Li

226. Inflammatory pre-conditioning limits alpha-synuclein seeding and transmission in wild type mice. Paramita Chakrabarty, Emily Koller, Mieu Brooks, Vincent Hudson III, Awilda Rosario, Todd Golde, Benoit Giasson

227. Expression pattern from rAAV vectors carrying the 66 bp minimal herpes simplex virus 1 thymidine kinase (minTK) promoter in the mouse brain. Pedro Cruz, Carolina Ceballos-Diaz, Awilda Rosario, Zhaozhong Li, Xuefei Liu, Veronica Richards, Devin Galin, Amanda Hernandez, Veronica Laux, Kimberly Menezes, Thomas Delgado, Van Truong, Laura Londono, Joshua Walton, Alexis Thornton, Erica Christenson, Jessica Lew, Yona Levites, Paramita Chakrabarty, Edgardo Rodriguez, Todd Golde

228. Subthalamic nucleus firing rates in a Parkinsonian population. Corinna Peden, P. Justin Rossi, Michael Okun, Aysegul Gunduz

229. Activation of toll-like receptor pathways in fetal hypothalamus after transient maternal ventilatory hypoxia. Charles Wood, Eileen Chang, Miguel Zarate, Elaine Richards

- 230. The genomic effects of ketamine on the transcriptomics response to umbilical cord occlusion in the fetal cerebral cortex: Comparison with hypoxic hypoxia suggests potential mechanism.** Miguel Zarate, Eileen Chang, Charles Wood
- 231. Short Amyloid-beta peptides are anti-amyloidogenic and attenuate the toxicity of Amyloid-beta 42 *in vivo*.** Brenda Moore, Jason Martin, Lorena de Mena, Pedro Cruz, Carolina Ceballos, Heather Bouchard, Estefania Steiner, Christopher Janus, Diego Rincon-Limas, Pedro Fernandez-Funez, Todd Golde
- 232. Exploring new substrates of the versatile signal peptide peptidase like proteins.** Yong Ran, Todd Golde
- 233. Correlation of recovery of bladder function with preservation of long tracts in spinal cord in rats.** Jacob Wilson, Xiaoping Luo, Daniel Hoh
- 234. Collagen and α -tubulin of tympanic membrane fibroblasts treated with quinolones and aminoglycosides.** Bailey Milne-Davies, Patrick Antonelli, Nicklas Orobello, Carolyn Dirain
- 235. Prolonged METH exposure suppresses BK channel activity in the dopamine neurons.** Min Lin, Danielle Sambo, Habibeh Khoshbouei
- 236. Comparison of IC6 and thalamic injections of AAV5 in an MPS IIIB model.** Kolarich Andrew, Gilkes Janine, Heldermon Coy
- 237. Cell-based quantitative high-throughput assays to identify small molecule therapies a neurological lysosomal storage disease.** Dae Song Jang, Melani Solomon, Ann Moser, Theresa Shapiro, Ernesto Bongarzone, Wenjuan Ye, Noel Southall, Xin Hu, Juan Marugan, Marc Ferrer, Gustavo Maegawa
- 238. Using cell-activation and signaling-directed strategy to generate human induced neural stem cells (hiNSCs) from primary fibroblasts from MPS-II patients.** Guimei Tiam, Shin-ichi Kano, Gustavo Maegawa
- 239. Quantitative high-throughput screen to identify small molecule enhancers of mutant arylsulfatase A (ASA) in metachromatic leukodystrophy patient cell lines.** Guimei Tiam, Wenjuan Ye, Noel Southall, Xin Hu, Juan Marugan, Marc Ferrer, Gustavo Maegawa
- 240. Differential expression and localization of GPCRs to cilia of neurons in the olfactory bulb.** Jeremy McIntyre

241. Gene therapeutic rescue of olfactory function: Beyond the periphery. Warren Green, Cedric Uytingco, Kimberly Smith, Jeremy McIntyre, Jeffrey Martens

242. Gene therapeutic restoration of olfactory cilia and odor detection in Bardet-Biedl syndrome. Corey Williams, Cedric Uytingco, Art Zimmerman, Warren Green, Lian Zhang, Jeremy McIntyre, Val Sheffield, Jeffrey Martens

243. Alcohol and age effects on responding to and ignoring stimuli in a driving task. Julianne Price, Sarah Reaves, Ian Frazier, Jeff Boissoneault, Sara Jo Nixon

244. Gray matter damage and respiratory activity following mid-cervical spinal cord injury (SCI). L. Nicole Little, Casey Gilliams, Robert Dauser, David Fuller, Paul Reier

245. Design and construction of a mixed-reality lumbar puncture simulator. Amanda Boczkowski, Anindita Chakraborty, Orrin Dayton, Kristopher Hooten, Maryam Rahman, Didier Rajon, William Friedman, Frank Bova

246. Intensity-modulated radiosurgery treatments derived by optimizing delivery of sphere-packing plans. Michael Hermansen, Bonnie Chan, Theodore St. John, William Friedman, Frank Bova

247. Rapid fabrication of custom molds for in-OR fabrication of cranioplastic prosthesis. Didier Rajon, William Friedman, Frank Bova

248. Mapping Matrin-3 binding sites in the human brain using iCLIP. Alexandra Coomes, James Thomas, Maurice Swanson, Edgardo Rodriguez

249. Cell-type specific vulnerability in nucleotide repeat diseases. Rachna Manek, Zhaozhong Li, Alexandra Coomes, Edgardo Rodriguez

250. Incidence of depressive symptoms in atypical Parkinsonism is greater than Parkinson's disease. Leonardo Almeida, Bilal Ahmed, Roger Walz, Sol De Jesus, Addie Patterson, Daniel Martinez-Ramirez, David Vaillancourt, Dawn Bowers, Herbert Ward, Michael Okun, Melissa Armstrong, Nikolaus McFarland

251. Effects of viral RAB8A expression on alpha-synuclein toxicity in rodent models of Parkinsonism. Nikolaus McFarland, Hyo-Jin Park, Daniel Ryu, Lyndsey Powell, Rachael Foels, Mayur Parmur, Tomoko Sahara

- 252. Subjective report does not predict objective swallow impairment in atypical Parkinsonian syndromes.** Leili Shahgholi, Sol De Jesus, Addie Paterson, Wissam Deeb, Nikolaus McFarland, Karen Hegland
- 253. Delayed scalp erosion after DBS surgery: Incidence, treatment, outcomes, and prevention.** Justin Hilliard, Alberto Bona, Sasha Vaziri, Michael Okun, Kelly Foote
- 254. Electromagnetic tracking of upper extremity motion kinetics in severe tremor disorders.** Seth Oliveria, Madison Bellaire, Frank Bova, Kelly Foote
- 255. Inpatient hyperglycemia in post-operative malignant glioma patients.** Matthew Decker, Maryam Rahman
- 256. Leveraging temozolomide to enhance efficacy of immune checkpoint blockade in the treatment of glioblastoma.** Aida Karachi, Hassan Azari, Catherine Flores, Jianping Huang, Duane Mitchell, Maryam Rahman
- 257. Whole exome sequencing reveals mutations in SPG7 in a patient with cerebellar ataxia, executive dysfunction and emotional disconnection.** Karen McFarland, Linwei Zhang, Tetsuo Ashizawa
- 258. Neurosurgical management of mycotic aneurysms: Retrospective review.** Brian Hoh, Amit Singla, Meshka Anderson
- 259. Effects of IL-6-induced gliosis and anti-Abeta combinational therapy on amyloid deposition in Alzheimer's disease mouse model.** Franklin Burg, Partamita Chakrabarty, Xuefei Liu, Todd Golde, Yona Levites
- 261. Rich club networks distinguish lasting (24 h) effects of MDPV from cocaine: A potential CNS functional biomarker.** Luis Colon-Perez, Marcelo Febo
- 262. Resting state functional connectivity in rat brain during extended daily access to cocaine and abstinence.** Caitlin Orsini, Luis Colon-Perez, Sara Heshmati, Lori Knackstedt, Barry Setlow, Marcelo Febo
- 263. Behavioral characterization of the effects of cannabis smoke and anandamide in rats.** Adriaan Bruijnzeel, Xiaoli Qi, Lidia Guzhva, Shannon Wall, Jay Deng, Mark Gold, Marcelo Febo, Barry Setlow
- 264. Custom indentation system for viscoelastic characterization of brain tissue surrogates.** Daniel Stewart, Andres Rubiano, Chelsey Simmons

265. Repetitive motor behavior development and indirect basal ganglia pathway function in deer mice reared in an enriched environment.

Allison Bechard, Mark Lewis

266. Using diffusion MRI to assess basal ganglia circuitry in an animal model of repetitive behavior.

Bradley Wilkes, Luis Colon-Perez, Marcelo Febo, Mark Lewis

267. The effects of the allocation of focal attention and habituation on the line bisection task.

Kristi Balavage, Damon Lamb, Lauren Knight, David Bielick, Keith Kincaid, Kenneth Heilman

268. Hemispheric lateralization of attentional background distraction.

David Bielick, Damon Lamb, Keith Kincaid, Kristi Balavage, Lauren Knight, Kenneth Heilman

269. Effects of focal and global spatial attention on compound line bisection tasks.

Lauren Knight, Damon Lamb, Kristi Balavage, David Bielick, Keith Kincaid, Kenneth Heilman

270. Synchronization between the epileptic hippocampus and the scalp EEG.

Elakkat Gireesh

271. Capture of nascent RNAs during classical conditioning: Single-cell genomic deciphering of memory circuits.

Caleb Bostwick, Qizong Yang, Andrea Kohn, Robert Hawkins, Leonid Moroz

272. Single cell genome-wide analysis of ion channel expression in simpler neural circuits.

Andrea Kohn, Emily Dabe, Caleb Bostwick, Leonid Moroz

273. Molecular organization of octopus brains: First insights into unique memory center signaling.

Gabrielle Winters, Andrea Kohn, Rayanna Laux, Naama Stern, Anna Di Cosmo, Benny Hochner, Leonid Moroz

274. After intensive motor learning, evidence of plasticity in specific brain regions driving clinically significant recovery of function after stroke.

Janis Daly, Jessica McCabe, Michelle Monkiewicz, Svetlana Pundik

275. Anesthesia with sevoflurane in neonatal rats: Developmental neuroendocrine abnormalities are alleviated by corticosteroid receptor and Cl⁻ importer antagonists.

Ling-Sha Ju, Jiao-Jiao Yang, Oscar Hernandez, Christoph Seubert, Nikolaus Gravenstein, Anatoly Martynyuk

276. Characterization of motor behavior in Zip14-/- knockout mice.

Hurara Khan, Supak Jenkitkasemwong, Benoit Giasson, Mitchell Knutson, Christopher Janus

277. The development of cell-specific conditional Nrf2 knockouts using Cre-Lox recombination.

Morgan Carson, Jenna Leclerc, Lei Liu, Sylvain Doré

278. Increased brain hemopexin levels improves outcomes after experimental ICH.

Andrew Lampert, Jenna Leclerc, Juan Santiago-Moreno, Alex Dang, Pedro Cruz, Awilda Rosario, Todd Golde, Sylvain Doré

279. Modulation of blood accumulation and angiogenic responses by PGE2-EP3 signaling after ICH in aged mice.

Matthew Diller, Jenna Leclerc, Andrew Lampert, Sylvain Doré

280. Modulation of neuroinflammation by haptoglobin reduces oxidative stress and improves intracerebral hemorrhage outcomes.

Jenna Leclerc, Alex Dang, Juan Santiago-Moreno, Andrew Lampert, Sylvain Doré

281. PGE2 EP1-4 receptor expression levels after intracerebral hemorrhage in young, aged, and EP1 deficient mice.

Julie Bailes, Jenna Leclerc, Andrew Fadool, Chase Chambers, Sylvain Doré

282. Haptoglobin improves intracerebral hemorrhage outcomes by modulating angiogenic responses.

Tina Esfandiary, Jenna Leclerc, Sylvain Doré

283. Examining the effects of cell injury on microvesicle/exosome-mediated cell signaling.

Dhwani Kumar, Rachna Manek, Kevin Wang

284. Study of protein breakdown following traumatic brain injury by mass spectrometry-based proteomics.

Manasi Mangaonkar, Richard Yost, Kari Green, Kevin Wang

285. Human spinal cord injury CSF and serum biomarker study.

Kevin Wang, Zhihui Yang, Ahmed Moghieb, Helen Bramlett, Dongnan Yu, Ping Wang, Fan Lin, Carl Bauer, Tyler Selig, Zhiqun Zhang, Ronald Hayes, M. Ross Bullock, W. Dalton Dietrich, Michael Wang

286. A systematic rat spinal cord injury biomarker study examining the effects of injury severity and temporal biomarker profiling in two biofluid types.

Zhihui Yang, Helen Bramlett, Ahmed Moghieb, Dongnan Yu, Ping Wang, Fan Lin, Carl Baue, Tyler Selig, Zhiqun Zhang, Ronald Hayes, Michael Wang, W. Dalton Dietrich, Kevin Wang

287. Does VIM deep brain stimulation affect swallowing? Sol De Jesus, Julie Hicks, Leonardo Almeida, Leili Shahgholi, Addie Paterson, Alberto Bona, Bilal Ahmed, Karen Hegland, Kelly Foote, Michael Okun

288. Do different tic phenotypes have different responses to Comprehensive Behavioral Intervention for Tics (CBIT)? Wissam Deeb, Leonardo Almeida, Heather Simpson, Irene Malaty, Michael Okun

289. Safety and efficacy of botulinum toxin injections for cervical dystonia secondary to Parkinson disease and Parkinsonism versus cervical dystonia of other etiologies. Addie Patterson, Leonardo Almeida, Christopher Hess, Daniel Martinez-Ramirez, Erin Monari, Ramon Rodriguez, Valerie Rundle-Gonzalez, Aparna Shukla, Irene Malaty, Michael Okun

290. Subthalamic and pallidal processing of impulse control in the Parkinsonian human. P. Justin Rossi, Corinna Peden, Aysegul Gunduz, Michael Okun

291. Modulating the toxicity and inducing pathology in a YFP tagged mouse model of SOD1. Alexis Clare, Guilian Xu, Susan Fromholt, Jacob Ayers, David Borchelt

292. Prion-like propagation of mutant SOD1 misfolding and motor neuron disease spread along neuroanatomical pathways. Jacob Ayers, Susan Fromholt, Veronica O'Neal, Jeffrey Diamond, David Borchelt

293. Active immunization as a therapeutic strategy for SOD1-linked ALS. Sabrina Gill, Jacob Ayers, David Borchelt

294. Kinetics of SOD1 aggregation. Benjamin McMahan, Jacob Ayers, David Borchelt

295. Prion-like amyloid seeding from Alzheimer's disease and pathological aging brain lysates. Brenda Moore, Susan Fromholt, Jada Lewis, David Borchelt

296. Variability of familial ALS pathogenesis: Does SOD1 protein conformation play a role? Adriana Sari, Jacob Ayers, David Borchelt

297. Murine A β over-production produces diffuse and compact Alzheimer-type amyloid deposits. Guilian Xu, Yong Ran, Susan Fromholt, Chunhua Fu, Anthony Yachnis, Todd Golde, David Borchelt

298. Neural activity in the basolateral amygdala in a risky decision-making task in rats. Caitlin Orsini, Nick Simon, Marcelo Febo, Jennifer Bizon, Barry Setlow

299. Quantification of the Unified Parkinson's Disease Rating Scale (UPDRS) using non-invasive motion capture technology. Alexander Lubinski, Christopher Hess

300. Seeding properties of FTDP-17 associated tau mutants. Kevin Strang, Pedro Cruz, Paramita Chakrabarty, Carolina Ceballos, Vincent Hudson, Matt Hamm, Todd Golde, Benoit Giasson

301. Evaluating the effects of Deep Brain Stimulation in mice with ataxia (SCA1). Qianru Zhang, Hah Kim, Sara Kurtovic, Riken Nathu, Kelsey Savery, Karen McFarland, Tetsuo Ashizawa, Michael Okun, Vinata Vedam-Mai

VISION

302. BBS5 interactions in photoreceptor cells. Stephanie Cabrera, W. Clay Smith

303. Expression, cellular localization and function of Mas-related G-protein coupled receptor D and its novel ligand Alamandine in mouse retina. Tuhina Prasad, Ping Zhu, Yuyan Ma, Amrisha Verma, Yiming Li, Qiuhong Li

304. Adeno-associated virus (AAV) mediated overexpression of Angiotensin- (1-7) partially reverses diabetes-induced retinal pathophysiology in mice. Tuhina Prasad, Ping Zhu, Amrisha Verma, Qiuhong Li

305. Expression of repressor element 1-silencing transcription factor (REST) gene in rodent and human retina: Implication in AMD. Tuhina Prasad, Amrisha Verma, Ping Zhu, Qiuhong Li

306. Beneficial effects of combined AT1 receptor/nepriylsin inhibition (ARNI) versus AT1 receptor blockade alone in the diabetic eye. Tuhina Prasad, Lodi Roksnoer, Ping Zhu, Amrisha Verma, Yiming Li, Wendy Batenburg, René de Vries, A.H. Jan Danser, Qiuhong Li

307. Reduced Optic Atrophy 1 (OPA1) gene expression in diabetic retina: Implication of mitochondrial dynamics in pathogenesis of diabetic retinopathy. Amrisha Verma, Ping Zhu, Tuhina Prasad, Zhibing Liang, Qiuhong Li

308. Measuring mitochondrial dynamics in the retinal pigment epithelium under conditions of oxidative stress. Emily Brown, Casey Keuthan, John Ash

309. A unique role for PGC-1 β in regulating photoreceptor resistance to oxidative stress. Casey Keuthan, John Ash

310. Identifying the regulatory elements involved in the expression of Leukemia Inhibitory Factor. Clayton Santiago, John Ash

311. Conditional knockout of AMP-activated protein kinase $\alpha1\alpha2$ allele leads to retinal cone photoreceptor degeneration. Lei Xu, John Ash

312. Novel methodology for creating primate retina with sortable cell populations. Shreyasi Choudhury, Christianne Strang, Sanford Boye, Julie Hill, Douglas Witherspoon, Daniel Kasuga, Paul Gamlin, Shannon Boye

313. Quantifying retinal tropism of Adeno-Associated Virus vectors with capsids containing modulated Heparin Sulfate affinity. K. Tyler McCullough, Sanford Boye, Antonette Bennett, Kim Van Vliet, Shreyasi Choudhury, Qing Ruan, James Peterson, Mavis Agbandje-McKenna, Shannon Boye

314. Towards a clinical trial to treat GUCY2D Leber congenital amaurosis (LCA1). James Peterson, Sanford Boye, William Hauswirth, James Peterson, Seok Hong Min, Qing Ruan, Catherine O'Riordan, Michael Lukason, Abraham Scaria, Shannon Boye

315. Quantifying relative transduction efficiency of rAAVs in retinal ON bipolar cells *in vivo*. Miranda Scalabrino, Seok-Hong Min, Sanford Boye, Shannon Boye

317. A 5HT1a agonist stimulates an antioxidant response and protects the retina in a mouse model of geographic atrophy. Alfred Lewin, Chulbul Ahmed, Manas Biswal, Hong Li, Hayou Mao

318. Early sub-retinal delivery of AAV-Sod2 protects the retina in a mouse model of progressive retinal degeneration. Manas Biswal, Cristhian Ildefonso, Brad Justis, Hong Li, Ping Han, Ping Zhu, Haoyu Mao, Lindsey Buz, Michael Massengill, Chulbul Ahmed, Alfred Lewin

319. Induction of endogenous Nrf2 activation in the retina partially protects from oxidative stress and inflammation. Cristhian Ildefonso, Henrique Jaime, Emily Brown, Ryo Iwata, Chulbul Ahmed, Michael Massengill, Manas Biswal, Shannon Boye, William Hauswirth, John Ash, Qihong Li, Alfred Lewin

320. Gene therapy utilizing short hairpin RNAs for autosomal dominant retinitis pigmentosa. Michael Massengill, William Hauswirth, Alfred Lewin

321. Point of care testing of inflammatory markers in tears. Mindy Wang, Alexander Blandford, Will Griffeth, Stephen Potter, Daniel Gibson, Gregory Schultz, Sonal Tuli

HEALTH OUTCOMES

322. Association between prescription opioid use and frequent emergency department use. Sadaf Milani, Hannah Crooke, Linda Cottler, Catherine Striley

323. Dialogue through goodheartedness: Creative film and the rhetoric of non-violence in medical narratives. Kavita Chapla

324. Congenital heart disease in patients with Turner Syndrome: Natural history and outcomes of cardiovascular surgery. Joshua Reside, Jahanzaib Idrees, Adam Beck, Eugene Blackstone, Lars Svensson, Gosta Pettersson, Brian Griffin, Patrick Collier, Christopher Pierce, Ken Zahka, Eric Roselli

325. 15-year outcomes of patients treated for breast cancer with breast conserving therapy. Meriem Mokhtech, Tamara Smith, Chris Morris, Judith Lightsey, Julie Bradley, Nancy Mendenhall

326. Long-term outcomes after radiotherapy with or without chemotherapy for Hodgkin lymphoma. Simeng Zhu, Adam Holtzman, Nancy Mendenhall

327. UF primary care physicians' satisfaction. Denny Fe Agana, Robert Hatch, Peter Carek, Daniel Rubin, Maribeth Porter

328. Development of an educational resource and model curriculum on use of psychotropic medications during pregnancy and lactation for psychiatric trainees. Sheema Khan, Jordan Brown, Yanmin Zhu, Jacqueline Hobbs

329. Outcomes of inpatient versus outpatient cleft lip repair. Kelly Palmer, Ashley Lentz

330. Are baseline pain sensitivity and genetic factors associated with acute and chronic post-thoracotomy pain? Natalia Pawlowicz, Andre Boezaart, Charles Klodell, Jr, Margaret Wallace, Reginald Frye, Barbara Hastie

331. From birth to books: Implementation of a neighborhood-based parent education & healthcare support program for school readiness. Samantha Taylor, Nancy Hardt

332. The correlation between previous non-fatal traumatic injuries and non-natural deaths: A case series. Han You, Stephen Pape, Daniel Spearman, James Grigg, Martha Burt, Nancy Hardt

333. Student-run free-clinic participation has a positive and significant correlation in medical student professional development. Kamil Nowicki, Martin Wegman, Raphael Bosse, Amanda Sacino, Lou-Ann Cooper, Nancy Hardt, Ku-Lang Chang

334. PCORI – An emergency department-to-home intervention to improve quality of life and reduce hospital use. Meenakshi Balakrishnan, Jessica Schumacher, Allyson Hall, Phyllis Hendry, Barbara Lutz, Jeffery Harman, Jingnan Zhang, Jonathan Shuster, Jessica Kalen, Donna Carden

335. Functional outcomes utilizing the Short Physical Performance Battery (SPPB) after epidural steroid injection compared to medication therapy in elderly patients with lumbar spinal stenosis. Christopher Babl, Mohamed Osman, Steven Fisher, Terrie Vasilopoulos, Elena Volpi, Rene Przkora

336. 30 day readmission rates due to pain at an academic inpatient facility: A retrospective study. Shawn Hughes, F. Kayser Enneking, Rene Przkora

337. Medical management of a patient with Myeloradiculitis from high-dose opiates used in targeted drug delivery. Spencer Hyde, Renee Gallo, Rene Przkora

338. Bilateral thalamic infarcts from occlusion of artery of percheron after successful recanalization of basilar artery dissection and thrombosis in setting of intracranial fibromuscular dysplasia: A case report. Faraz Khursheed, Arash Afshinnik, James Milburn, Kenneth Gaines, Vivek Sabharwal, Gabriel Vidal, Rene Przkora

339. Frequency-specific electrocorticographic correlates of working memory delay period. Faraz Khursheed, Nitin Tandon, Kathrin Tertel, Thomas Pieters, Michael Disano, Timothy Ellmore, Rene Przkora

340. Business and practice management education in pain medicine fellowships. Richard Sims, Ajay Antony, Richard Rosenquist, Gary Brenner, Jay Mesrobian, Amr Abouleish, Rene Przkora

341. Spinal cord stimulation: Beneficial effects in Raynaud's syndrome. Timothy Vollmer, Ajay Antony, Andrew McNeil, Rene Przkora

- 342. Preconceptional awareness of tobacco and ethanol use among disadvantaged women in the Dominican Republic based on educational level and source of medical information.** Weston Bertot, Erin Walker, Cristina Rabaza, Erich Wyckoff, Luis Esmurdoc, Robert Egerman
- 343. The effectiveness of enhanced teachable moments (charlas) on prenatal vitamin knowledge among disadvantaged women in the Dominican Republic.** Erin Walker, Cristina Rabaza, Weston Bertot, Erich Wyckoff, Luis Esmurdoc, Robert Egerman
- 344. Identification of risk factors for early readmission following plastic and reconstructive surgery.** David Kerekes, Peter Felice, Dominic Iorio, Elizabeth Pace, Christian Reintgen, Bruce Mast
- 345. Team-Based Learning for RCR Training Supports Ethical Decision-Making.** Wayne McCormack, William Allen, Shane Connelly, Lique Coolen, Joshua Crites, Jeffrey Engler, Cynthia Garvan, Paul Haidet, Joel Hockensmith, William McElroy, Rebecca Volpe, Michael Verderame
- 346. Mining Twitter as a first step toward assessing the adequacy of gender identification terms on intake forms.** Amanda Hicks, William Hogan, Michael Rutherford, Bradley Malin, Mengjun Xie, Christiane Fellbaum, Zhijun Yin, Daniel Fabbri, Josh Hanna, Jiang Bian
- 347. Efficacy of Laropiprant in ameliorating hyperglycemia-mediated intracerebral hemorrhage.** Monique Mendes, Sherry Ali, Sylvain Doré, Abdullah Shafique Ahmad
- 348. Same-day discharge after elective percutaneous coronary intervention.** Joshua Immergluck, Nayan Agarwal, Jose Alvarez-Cardona, Ryan Chaffe, Jonathan Davis, Theresa Wilson, Ki Park, Anthony Bavry, Calvin Choi
- 349. BMI as a predictor of post-intubation hypotension and the number of attempts in Rapid Sequence Intubation.** Amanda Horn, Jayike Nwokolo, Benjamin Banapoor, Adam Koby, Michael Marchick, Lars Beattie
- 350. Using pre-Rapid Sequence Intubation Shock Index as a predictor of post-intubation hypotension, mortality, and duration of intubation.** Adam Koby, Jayike Nwokolo, Amanda Horn, Benjamin Banapoor, Michael Marchick, Lars Beattie
- 351. Cardiovascular-specific mortality and kidney disease in patients undergoing vascular surgery.** Matthew Huber, Tezcan Ozrazgat-Baslanti, Paul Thottakkara, Salvatore Scali, Azra Bihorac, Charles Hobson

352. Peri-operative management of multiple non-cardiac implantable electronic devices. Juan Ramos, Sorin Brull

353. Validation of the ACS NSQIP risk calculator in neurosurgical patients. Tyler Carney, Jake Wilson, Joe Abbetemateo, Sasha Vaziri, Daniel Hoh

354. Biomarkers for Wilms Tumor: A systematic review. Eugene Cone, Stewart Dalton, Megan Van Noord, Henry Rice, Jonathan Routh

355. Retrospective chart review investigating the efficacy of the VBAC calculator in predicting success of women at UF who undergo a trial of labor after c-section. Girard Cua, Daniel Gibson, Erich Wyckoff

356. RAHMA Mercy Clinic – a Safety Net Clinic for our community. Livia Sura, Yasmin Islam, Haider Ali, Asad Haroon, Ghazal Farajzadeh, Ryneth Sok, Geoffrey Panjeton, Omar Iqbal, Mustafa Ahmed

357. Thinking like a scientist: Teaching for cognitive skills in a classroom setting – Teaching methods and course evaluation. Kristina Michaudet, Haley Carpenter, Mary Jo Koroly, Lou Ann Cooper

358. Thinking like a scientist: Teaching for cognitive skills in a classroom setting - Core concepts. Haley Carpenter, Kristina Michaudet, Mary Jo Koroly, Lou Ann Cooper

359. Syringe pump performance maintained with intravenous filter usage during low flow rate delivery for pediatric patients. Destiny Chau, Terrie Vasilopoulos, Miriam Schoepf, Christina Zhang, Brenda Fahy

360. Near infrared optical imaging identifies muscular dystrophy. Stephen Chrzanowski, Brittany Lee-McMullen, Abhinandan Batra, Sean Forbes, Krista Vandeborne, Elisabeth Barton, Glenn Walter

361. Crack/cocaine use and future criminal re-offenses among females in a therapeutic justice program. Abenaa Acheampong, Sonam Lasopa, Catherine Striley, Catina O'Leary, Linda Cottler

362. Risk factors for prescription opioid misuse by duration of misuse. Vicki Osborne, Sonam Lasopa, Catherine Striley, Linda Cottler

363. Gender differences in patterns of prescription opioid use and binge drinking among middle aged Floridians. Mirsada Serdarevic, Linda Cottler

364. Agar ultrasound phantoms for low-cost training without refrigeration. Matthew Earle, Giuliano De Portu, Elizabeth DeVos

- 365. Waterpipe tobacco smoking and susceptibility to cigarette smoking among young adults in the United States, 2012-2013.** Ramzi Salloum, Rifat Haider, Tracey Barnett, Yi Guo, Kayla Getz, James Thrasher, Wasim Maziak
- 366. Use of electronic cigarettes among cancer survivors.** Ramzi Salloum, Kayla Getz, Thomas George, Elizabeth Shenkman
- 367. Evaluation of postoperative seizures following supratentorial tumor resection – A quality initiative.** Will Carlton, Gregory Murad
- 368. Use of LP simulators in medical education.** Anindita Chakraborty, Frank Bova, Kristopher Hooten, Gregory Murad
- 369. Complications following autologous bone flap storage for cranioplasty: A comparative analysis of the literature.** Timothy Gooldy, Brian Corliss, Sasha Vaziri, Gregory Murad
- 370. Nuchal thickness and risk of surgical site infection after posterior cervical spine surgery.** Dennis Timothy Lockney, Timothy Gooldy, Gregory Murad
- 371. System-level postcards increase adolescent HPV vaccine initiation and well visits.** Stephanie Staras, Susan Vadaparampil, Lindsay Thompson, Elizabeth Shenkman
- 372. Age moderates association between pre-existing psychological illness and inpatient outcomes for orthopedic trauma patients.** Terrie Vasilopoulos, MaryBeth Horodyski, Laura Zdziarski, Kalia Sadasivan, Heather Vincent
- 373. Stone size at initial presentation at a tertiary care center: Demographics.** Marla Wardenburg, Jeanette Brown, Babatunde Carew, Rupam Ruchi, Vincent Bird, Xuerong Wen, Victoria Bird
- 374. Prostate cancer with metastatic lytic bone lesions: Positive bone scan post docetaxel chemotherapy in the setting of clinically successful treatment.** Paula Domino, Stephanie Stillings, Raymond Sutwoski, Jorge Trejo-Lopez, Victoria Bird
- 375. Analysis of therapeutic modalities proposed for treatment of hyperoxaluria in patients with calcium oxalate nephrolithiasis.** Paula Domino, Michael Cornwell, Helena Cowley, Victoria Bird

376. Accurate determination of 24-hour urine creatinine in patients with nephrolithiasis: Effects of gender, age, BMI and protein catabolic rate. Jeremy Bergamo, Julia Han, Vincent Bird, Rupam Ruchi, Xuerong Wen, Victoria Bird

377. GATOR Kidney Risk Score. Ashkan Ebadi, Anis Davoudi, Paul Thottakkara, Tezcan Ozrazgat-Baslanti, Parisa Rashidi, Azra Bihorac

378. Application of machine learning techniques to high-dimensional clinical data to predict risk for postoperative complications. Carmen Khorram, Paul Thottakkara, Ashkan Ebadi, Tezcan Ozrazgat-Baslanti, Anis Davoudi, Parisa Rashidi, Azra Bihorac

379. Preoperative enteral access is not requisite for patients undergoing neoadjuvant chemoradiation prior to esophagectomy for malignant disease. Thomas Jenkins, Alexandra Lopez, Ryan Thomas

380. Transfused blood from older donors is associated with improved survival in patients undergoing hepatic surgery for non-hepatocellular malignancies. Alexandra Lopez, Thomas Jenkins, Shelby Thompson, Edward Downey, James Sikora, J. Peter Pelletier, Ivan Zendejas, Ryan Thomas

381. Impact of thoracic paravertebral continuous catheters and epidurals on surgical and anesthetic outcomes for patients undergoing liver resections. Jennifer Mallek, Amanda Allen, Taylor Chou, Ivan Zendejas, Terrie Vasilopoulos, Christopher Giordano, Patrick Tighe

382. Improving informed consent to participate in cancer research: An experimental comparison of metaphorical and plain language messages. Jordan Neil, Yulia Strelakova, Janice Krieger

383. Correlating retinal hemorrhages to abuse in children admitted with suspicion of non-accidental trauma. Reesa Lendry, Cameron Rosenthal, Casey Beal

384. GI endoscopy insufflating gas pressure: How regulated is the regulator? Alberto Bursian, Nikolaus Gravenstein, Peter Draganov, Jeffrey White

385. Patient utilization rates of an internet portal to an EMR by age, gender and clinic type. Sey Park, Joseph Rush

386. Early trajectories of alcohol and other substance use among youth from rural communities within the Cherokee Nation. Sarah Lynne-Landsman, Kelli Komro, Misty Boyd, Terrence Kominsky, Brady Garrett, Mildred Maldonado-Molina

- 387. Computational system for tracking organ doses in pediatric cardiac catheterizations.** Emily Marshall, David Borrego, Wesley Bolch, James Fudge
- 388. Measuring arterial stiffness in children with type 1 diabetes who have received or not received rapid acting insulin for a mixed meal using applanation tonometry.** Jordan Ashcraft, Colette Meehan, Pooja Kethireddy, Michael Haller
- 389. Psychotropic polypharmacy patterns in Medicaid recipients: Trends and concerns.** Regina Bussing, Xinyue Liu, Juan Hincapie-Castillo, Almut Winterstein
- 390. Deficits in self-conscious emotional response to errors in hoarding disorder.** Jessica Zakrzewski, Samir Datta, Carole Scherling, Krystal Nizar, Ofilio Vigil, Howie Rosen, Carol Mathews
- 391. Age and fertility: A study on patient awareness.** Sara Deatsman, Terrie Vasilopoulos, Alice Rhoton-Vlasak
- 392. Fertility preservation: A novel method to improve fertility discussion and documentation.** Nalini Hasija, Rana Hawamdeh, Lakshmikanth Katragadda, Jessica Schmit, Karen Daily, Alice Rhoton-Vlasak
- 393. A semantic web representation of entire populations.** Daniel Welch, William Hogan, Amanda Hicks, Josh Hanna
- 394. What really interrupts cardiopulmonary resuscitation in an out of hospital cardiac arrest?** Ousama Aboushaar, Ryan Brown
- 395. What really interrupts cardiopulmonary resuscitation in an out of hospital cardiac arrest?** Ryan Brown, Ousama Aboushaar, Christine Van Dillen
- 396. The PRIDE study: A longitudinal health study of LGBTQ people.** Jeffrey Ferrell, Mitchell Lunn, Juno Obedin-Maliver
- 397. Complications in children requiring long term central venous access.** Nicholas Laconi, Shawn Larson, Janice Taylor, David Kays, Saleem Islam
- 398. Reliability of the cholecystokinin stimulated HIDA scan in predicting outcomes in biliary dyskinesia in children.** Nicole Markwith, Daniel Solomon, David Kays, Janice Taylor, Saleem Islam

399. Outcomes of spontaneous pneumothorax in pediatric patients: Is early intervention the appropriate treatment? Lisa Soler, David Kays, Shawn Larson, Janice Taylor, Saleem Islam

400. Premature babies with inguinal hernias: When should we repair? Nadine Zeidan, Shawn Larson, Janice Taylor, David Kays, Daniel Solomon, Saleem Islam

401. Retrospective assessment of coarctation of aorta repair in a tertiary pediatric cardiac center. Kelly Costopoulos, Dalia Lopez-Colon, Arun Chandran, Joseph Philip, Mark Bleiweis

402. Giant fibroadenomas and the role for oncoplastic breast surgery. Lori Gentile, Makeesha Miggins, Druv Singhal, Lisa Spiguel

403. Differences in drug relapse rates between alternative rehabilitation programs in Malaysia. Martin Wegman, Frederick Altice, Vanesa Rajandaran, Jeannia Fu, David Wilson, Adeeba Kamarulzaman

404. Racial differences in telescoping: Investigation in a treatment-seeking sample. Christian Garcia, Ben Lewis, Lauren Hoffman, Sara Jo Nixon

405. Oral health services for children on Medicaid in the primary care setting. Mickey Emmanuel, Rebecca Mercado, Frank Catalanotto, Scott Tomar, Lindsay Thompson

406. Screening adolescent health literacy using the newest vital sign health literacy screener. Alicia Guerrero, Rebecca Mercado, Lindsay Thompson

407. Understanding the financial impact of obesity in the Emergency Department. Brandon Burns, De-Vaughn Williams, Matthew Ryan

408. Disparities in the ED between race, gender, and age groups correlated to BMI. De-Vaughn Williams, Brandon Burns, Matthew Ryan

409. Unrecognized co-morbidities among chronic pain patients attending inner-city family medicine residency pain clinic. Jeffrey Costain, Courtney Jones, George Samraj, Helen Hagan, Lesa Gilbert, Alyson Listhaus, Siegfried Schmidt

410. Toward clinical decision support for chronic pain: Integrating patient reported outcomes in an electronic health record. Christopher Harle, Siegfried Schmidt, Jonathan Shuster, Sean Mackey, Alyson Listhaus, Lilliana Bell, Constanza Covarrubias, TaJuana Chisholm, Roger Fillingim, Robert Hurley

- 411. Establishing a pain management program within a university based family medicine residency.** Siegfried Schmidt, Lesa Gilbert, Ku-Lang Chang, George Samraj, Alyson Listhaus
- 412. Exploring career ambivalence in US medical students.** Monica Hill, Lisa Merlo
- 413. Effects of adverse childhood experiences on cortisol awakening response in children.** Andre Alexander, Melissa Bright
- 414. Birth outcomes as predictors of ACEs in the first two years of life.** Melissa Bright, Annalicia Burns
- 415. “There’s just not enough time.” Screening for ACEs in pediatric practice.** Anna West, Melissa Bright
- 416. Simulation-based assessment of improvements in cognitive performance in an anesthesiology residency training program.** Avner Sidi, Terrie Vasilopoulos, Nikolaus Gravenstein, Samsun Lampotang
- 417. Development and validation of an instrument to measure collaborative goal setting in the care of patients with diabetes.** Heather Morris, Levent Dumenci, Jennifer Elston Lafata
- 418. Identifying features of photoplethysmography and heart rate variability unique to preeclamptic patients.** Elizabeth Bisbee, Tammy Euliano
- 419. Electrophysiological analysis of orthostatic tremor.** Brandon Metra, Enrico Opri, Wissam Deeb, Christopher Hess
- 421. The incidence of in-hospital mortality in patients with post-intubation hypotension (PIH) and an assessment of the effect of vasopressor therapy in the management of patients with PIH.** Benjamin Banapoor, Amanda Horn, Adam Koby, Jayike Nwokolo, Michael Marchick, Lars Beattie
- 422. Impact of cardiovascular comorbidities and outpatient medications on the development of hypotension following rapid sequence intubation.** Jayike Nwokolo, Amanda Horn, Adam Koby, Benjamin Banapoor, Michael Marchick, Lars Beattie
- 423. Mobile care for a silent disease.** Shivani Patel, Mary Ishola, Ivana Milian, Brandon Sanders, Mona Sayedul Huq, James Grigg, Nancy Hardt

424. Prevalence of non-communicable diseases in rural Haiti. Lindsay Crompton, Stuart Malcolm, Joane Cadet, Meagan Kelly, James Grigg, Vince DeGennaro

425. Greater susceptibility to impulsive actions with GPi DBS in Parkinson's patients. Daniel Martinez-Ramirez, Christopher Little, John Chapman, Samuel Carbutaru, Fiona Chai, Juan Giugni, Matthew Vasquez, Roger Walz, Ashok Sririam, Kristen Kanoff, Scott Wylie, Michael Okun

426. Medical students NBME performance and their neurology clerkship satisfaction. Daniel Martinez-Ramirez, Samuel Carbutaru, Addie Patterson, Sol De Jesus, Leonardo Almeida, Leili Shahgholi, Erin Hastings, Christina Wilson, Robert Hatch, Michael Okun, Maureen Novak

427. Inappropriate use of myocardial perfusion imaging in women: Predictors and results of testing. Ali Alsamarah, Asha Bansari, Hesham Nasser, Wajiha Raz, David Winchester

428. Inappropriate use of myocardial perfusion imaging: Radiology vs. Cardiology. Anastasiya Bagrova, Ali Alsamarah, David Winchester

429. Portrayal of inappropriate use of myocardial perfusion imaging on social media and the worldwide web. Diana Baxter, Rebecca Beyth, David Winchester

430. Risks of radiation use in cardiovascular imaging. Daniel Cordiner, David Winchester

431. Patient and provider opinions about the appropriateness of myocardial perfusion imaging: Comparison to published appropriate use criteria. Kristopher Kline, Jared Plumb, Linda Nguyen, Tianyao Huo, Rebecca Beyth, David Winchester

432. Impact of simulation based training for transesophageal echocardiography. David Winchester, Anita Wokhlu, Carsten Schmalfluss

433. A specialty specific educational intervention to reduce unnecessary myocardial perfusion imaging. David Winchester, Matthew Butler, Michael Massoomi, George Dibu, Rebecca Beyth

434. Even re-operative aortic arch replacement has low mortality in elective setting. Seyed Hossein Aalaei-Andabili, Charles Klodell, Teng Lee, Thomas Zeyl, Philip Hess, Tomas Martin, Thomas Beaver

435. Mid-term results of single-stage frozen elephant trunk repair.

Seyed Hossein Aalaei-Andabili, Charles Klodell, Teng Lee, Philip Hess, Tomas Martin, Adam Beck, Robert Feezor, Salvatore Scali, Thomas Beaver

436. The fate of donor hearts rejected for transplant: A single institutional experience.

Caleb Matthews, David Hall, Juan Aranda, Mustafa Ahmed, James Hill, Anita Szady, Juan Vilaro, Charles Klodell, Thomas Beaver

437. Characteristics of sleep in chronic kidney disease.

Nicole Kay, Shahab Bozorgmehri, Areef Ishani, I. David Weiner, Richard Berry, Rebecca Beyth, Muna Canales

438. The association between college football games and genital herpes diagnoses among university students: An analysis of 9 years of electronic medical records.

Jacob Ball, Sheldon Waugh, Guy Nicolette, Xinguang Chen, Travis Gerke

439. Excellence in practice: Building a sustainable emergency department Sexual Assault Nurse Examiner (SANE) program.

Cristina Zeretzke-Bien, Jennifer LaLonde

440. Diversity in the medical profession.

Vanessa Billingsley, Paul Madsen

441. An adolescent male with altered mental status.

Erin Garrigan, Elizabeth Plasencia, Molly Posa, Maria Kelly

442. High-fidelity uterine simulation aid for teaching ultrasound-guided procedures.

Susan Dalton, Monique Ho

443. Carbon dioxide versus air insufflation in screening colonoscopy: Does carbon dioxide insufflation impact adenoma detection rate? A single-center retrospective analysis.

Yaseen Perbtani, Michael Rivero, Johnathan Shuster, Joydeep Chakraborty, Tony Brar, Han Zhang, Mitali Agarwal, Anand Gupte, Shailendra Chauhan, Christopher Forsmark, Peter Draganov, Dennis Yang

444. Altered resting state functional connectivity is correlated with fatigue and pain in patients with chronic fatigue syndrome.

Jeff Boissoneault, Janelle Letzen, Andrew O'Shea, Song Lai, Mike Robinson, Roland Staud

445. Functional brain activity associated with noxious heat in a patient with congenital insensitivity to pain.

Jeff Boissoneault, Donald Price, Roland Staud

446. Porcine tri-layer wound matrix for the treatment of stage IV pressure ulcers. Paula Beers, Cheri Adgerson, Susan Millan

447. The impact of health literacy and socio-economic status on quality of life and disease awareness in CKD patients: An observational clinical study. Colin Hinkamp, Emma Segal, Xuerong Wen, Ashutosh Shukla

448. Decrease in functional brain connectivity following orthopedic surgery. Haiqing Huang, Peter Nguyen, Jared Tanner, Nadine Schwab, Hari Parvataneni, Mark Rice, Ilona Schmalfuss, Ann Horgas, Thomas Mareci, Catherine Price, Mingzhou Ding

449. The effect of continued aspirin therapy in patients undergoing percutaneous nephrolithotomy. Forat Lutfi, Brandon Otto, Russell Terry, Mohit Gupta, Vincent Bird

450. Implementation of a multidisciplinary rib fracture management protocol including selective open reduction and internal fixation: Safety and impact on inpatient outcomes. Martin Rosenthal, Chasen Croft, Jianyi Zhang, Babette Brumback, Andre Boezaart, Janeen Jordan, R. Steven Smith, Alicia Mohr, Frederick Moore, Lawrence Lottenberg, Scott Brakenridge

451. Preventing lethal domestic violence: The Intimate Partner Violence Assistance Clinic. Ansley Schulte, Max Webber, Veronica Robleto, Teresa Drake, Nancy Hardt

452. Minimizing leukemia relapse: A Phase I, dose-escalation study of decitabine in high risk pediatric leukemia post allogeneic stem cell transplantation. Jordan Minish, Lamis Eldjerou

ELECTRONIC POSTERS

453. Comprehensive biomechanical and metabolic analysis of running with differing hydration gear conditions. Kyle Fallgatter, Laura Ann Zdziarski, Cong Chen, Daniel Herman, Trevor Leavitt, JoAnna Iacono McClelland, Joseph Wasser, Kevin Vincent, MaryBeth Horodyski, Heather Vincent

454. The orthopaedic trauma experience in obese and morbidly obese patients: From admission to discharge. Heather Vincent, Laura Zdziarski, Terrie Vasilopoulos, Marybeth Horodyski, Jennifer Hagen, JoAnna McClelland, Kalia Sadasivan

- 455. The influence of strength on jump landing biomechanics during maturation in females – implications for ACL injury risk and prevention.** Daniel Herman, Giorgio Negron, Kyle Fallgatter, Heather Vincent
- 456. Ankle bracing effects on lower extremity biomechanics during a drop-cutting task.** Giorgio Negron, Cong Chen, Kyle Fallgatter, Heather Vincent, Daniel Herman
- 457. Ankle bracing effects on lower extremity biomechanics during drop-jump and jump-cutting tasks.** Giorgio Negron, Cong Chen, Kyle Fallgatter, Heather Vincent, Daniel Herman
- 458. Open hand fractures: A prospective look at functional outcomes and risk factors for infection.** Nicholas Newsum, Aimee Struk, Marybeth Horodyski, Robert Matthias
- 459. Pitching injury prevalence in collegiate baseball pitchers based on geographic location of high school baseball participation: A multi-centered study.** Jason Zaremski, Laura Ann Zdziarski, Brian Krabak, Mark Dundas, Kenneth Mautner, John Dunham, Paul Wolkoff, Mederic Hall, Andrew Papendieck, MaryBeth Horodyski
- 460. Decreasing morbidity and mortality in adolescent sports through increased early recognition via educational symposia.** Jason Zaremski, JoAnna McClelland, M. Seth Smith, Bryan Prine, MaryBeth Horodyski
- 461. Assessment of athletic trainers' communication skills in the orthopaedic trauma hospital setting.** Laura Zdziarski, Heather Vincent, Kalia Sadasivan, Terrie Vasilopoulos, MaryBeth Horodyski
- 462. Biomechanical analysis of percutaneous fixation of femoral neck fractures.** Cesar Alvarado, Ryan Schnetzer, MaryBeth Horodyski, Cong Chen, Adam Bruggeman, Richard Vlasak
- 463. Clinical predictors for optimal functional outcomes in primary reverse total shoulder arthroplasty.** David Sollaccio, Aimee Struk, Kevin Farmer, Thomas Wright
- 464. Reverse total shoulder arthroplasty in wheelchair dependent patients.** Adam Kemp, Thomas Wright
- 465. Effects of increasing or decreasing metabolic, cardiopulmonary and biomechanical responses during downhill running.** Kevin Vincent, Trevor Leavitt, Laura Ann Zdziarski, Cong Chen, Dan Herman, JoAnna McClelland, Joseph Wasser, MaryBeth Horodyski, Jason Zaremski, Heather Vincent



UF | UNIVERSITY of
FLORIDA

The Foundation for The Gator Nation

THE UF COLLEGE OF MEDICINE
OFFICE OF RESEARCH AFFAIRS
(352) 273-5995

[HTTP://RESEARCHAFFAIRS.MED.UFL.EDU](http://RESEARCHAFFAIRS.MED.UFL.EDU)